

ADAM'S Est 1887



FINE PERIOD INTERIORS AUCTION

SUNDAY 20<sup>H</sup> SEPTEMBER 2015 AT 11.30AM



# SUNDAY INTERIORS AUCTION

## AUCTION

Sunday 20<sup>th</sup> September 2015 at 11:30am

## VENUE

26 St. Stephen's Green, Dublin D02 X665

## SALE CODE

This sale may be referred to as 8140 in all correspondence

## CATALOGUE

€10.00 (Plus postage & packaging)

Free to download at [www.adams.ie](http://www.adams.ie)

or download the Adam's app and browse the catalogue on iPad or iPhone

## VIEWING

Thursday	17th September	9:30am - 5:00pm
Friday	18th September	9:30am - 5:00pm
Saturday	19th September	11:00am - 5:00pm

## COLLECTIONS

All lots must be paid for and collected before 5:00pm on Tuesday 24th at the purchaser's risk and expense, after which time items will be removed to commercial storage.

# ADAM'S

EST. 1887

26 St. Stephen's Green

Dublin 2 D02 X665

Tel +353 1 6760261

[info@adams.ie](mailto:info@adams.ie)

[www.adams.ie](http://www.adams.ie)



## CONTACTS



Brian Coyle FSCSI FRICS  
CHAIRMAN



James O'Halloran BA FSCSI FRICS  
MANAGING DIRECTOR  
j.ohalloran@adams.ie



Stuart Cole MSCSI MRICS  
DIRECTOR  
s.cole@adams.ie



David Britton BBS ACA  
DIRECTOR  
d.britton@adams.ie



Eamon O'Connor BA  
DIRECTOR  
e.oconnor@adams.ie



Nick Nicholson  
CONSULTANT  
n.nicholson@adams.ie



Kieran O'Boyle BA Hdip ASCSI  
ASSOCIATE DIRECTOR  
k.oboyle@adams.ie



Ronan Flanagan  
FINE ART DEPARTMENT  
ronan@adams.ie



Adam Pearson BA  
FINE ART DEPARTMENT  
a.pearson@adams.ie



Karen Regan  
JEWELLERY & WATCHES  
karen@adams.ie

important information for purchasers

### ESTIMATES AND RESERVES

These are shown below each lot in this sale. All amounts shown are in Euro. The figures shown are provided merely as a guide to prospective purchasers. They are approximate prices which are expected, are not definitive and are subject to revision. Reserves, if any, will not be any higher than the lower estimate.

### PADDLE BIDDING

All intending purchasers must register for a paddle number before the auction. Please allow time for registration. Potential purchasers are recommended to register on viewing days.

### PAYMENT, DELIVERY AND PURCHASERS PREMIUM

Monday 21st September 2015, 10.00am - 5pm. Under no circumstances will delivery of purchases be given whilst the auction is in progress. All purchases must be paid for and removed from the premises not later than 5pm on Monday 21st September 2015 at the purchaser's risk and expense. After this time all uncollected lots will be removed to commercial storage and additional charges will apply.

Auctioneers commission on purchases is charged at the rate of 20% (exclusive of VAT). Terms: Strictly cash, bankers draft or cheque drawn on an Irish bank. Cheques will take a minimum of five working days to clear the bank, unless they have been vouched to our satisfaction prior to the sale, or you have a previous cheque payment history with Adam's. Purchasers wishing to pay by credit card (Visa & MasterCard) may do so, however, it should be noted that such payments will be subject to an administrative fee of 1.5% on the invoice total. American Express is subject to a charge of 3.65% on the invoice total. Debit cards including laser card payments are not subject to a surcharge, there are however daily limits on Laser card payments. Bank Transfer details on request. Please ensure all bank charges are paid in addition to the invoice total, in order to avoid delays in the release of items. Goods will only be released upon clearance through the bank of all monies

### CREATE A 'MY ADAM'S' ACCOUNT

You can now create your own account with us by signing up and registering your particulars online at [www.adams.ie](http://www.adams.ie)

The process involves uploading identification by way of passport or driving license and supplying valid credit card information. This is a once off request for security purposes, and once the account is activated you will not be asked for this information again. You can leave absentee bids online, and add, edit or amend bids accordingly as well as other useful functions including paying your invoice.

due. Artists Resale Rights (Droit de Suite) is NOT payable by purchasers.

### VAT REGULATIONS

All lots are sold within the auctioneers VAT margin scheme. Revenue Regulations require that the buyers premium must be invoiced at a rate which is inclusive of VAT. This is not recoverable by any VAT registered buyer.

It is up to the bidder to satisfy themselves prior to buying as to the condition of a lot. Whilst we make certain observations on the lot, which are intended to be as helpful as possible, references in the condition report to damage or restoration are for guidance only and should be evaluated by personal inspection by the bidder or a knowledgeable representative. The absence of such a reference does not imply that an item is free from defects or restoration, nor does a reference to particular defects imply the absence of any others. The condition report is an expression of opinion only and must not be treated as a statement of fact.

Please ensure that condition report requests are submitted before 12 noon on Saturday 19th September as we cannot guarantee that they will be dealt with after this time.

### ABSENTEE BIDS

We are happy to execute absentee or written bids for bidders who are unable to attend and can arrange for bidding to be conducted by telephone. However, these services are subject to special conditions (see conditions of sale in this catalogue). All arrangements for absentee and telephone bidding must be made before 5pm on the day prior to sale. Cancellation of bids must be confirmed before this time and cannot be guaranteed after the auction as commenced.

Bidding by telephone may be booked on lots with a minimum estimate of €500. Early booking is advisable as availability of lines cannot be guaranteed.

All lots are being sold under the Conditions of Sale as printed in this catalogue and on display in the salerooms





Lot 187



Lot 76



Lot 2

- |   |   |   |   |
|---|---|---|---|
| 1 | <p>A MID VICTORIAN BURR WALNUT CASED LADIES TRAVELING TOILET SET, the lift top with inner mirror opening to reveal a fitted interior, complete with silver topped clear glass jars and boxes, hallmarks for London 1873, the fall front revealing a short drawer and a jewellery drawer, the silvered locking plate stamped 'Bramah Patent London'. 30 x 23 x 20cm high</p> <p>€400 - 600</p>   | 4 | <p>A COLLECTION OF FOUR MODERN SILVER MUSTARD POTS, comprising: a rectangular bulbous shaped mustard pot, Birmingham 1912-1913, mark of Edward Souter Barnsley, raised on scroll legs and pad feet; a similar mustard pot, London 1927-28, mark of Finnegan Ltd.; two similar small mustard pots, one Birmingham 1900-1, mark of J.R. Ltd.; the other Birmingham 1905-6, mark of William Aitken, each pot with hinged lid, blue glass liner and silver mustard spoon (c.6.5ozs in all) (8 items in total)</p> <p>€150 - 200</p> |
| 2 | <p>A CLOSE PAIR OF EDWARDIAN HELMET SHAPED SILVER SAUCE BOATS, each London 1907, with corresponding makers and retailers marks, with plain body, serrated rims, scroll handles and raised on scroll supports and hoof feet (c. 7.5ozs all in) (2)</p> <p>€200 - 300</p>   | 5 | <p>A CIRCULAR SILVER SUGAR CASTER, Dublin 1933, with beaded banding and raised on rim foot; together with a pair of pepper pots, Birmingham; together with two mustard pots, Birmingham and Sheffield marks (c.12oz all-in) (5)</p> <p>€ 150 - 250</p>  |
| 3 | <p>A MATCHED EDWARDIAN SILVER AND CUT GLASS INKWELL AND STAND, the inkwell, Birmingham 1902, mark of A&amp;J Zimmerman Ltd and retailed by Asprey London; the stand, London 1902, mark of Charles Asprey and George Asprey, the dished oval stand fitted with facet cut ink pot and raised on tapering scroll feet. c.19cm wide; Together with a collection of six white metal menu stands in the form of cherubs, each seated and holding various instruments. (7)</p> <p>€100 - 200</p> | 6 | <p>A PLAIN SILVER CREAM JUG, London 1922, of circular baluster form with 'C' scroll handle; Together with a plain circular sugar bowl with reeded rim, Chester 1904; Together with a silver cream helmet with spiral fluting, London 1895 and raised on shell and pad feet (c.13oz) (3)</p> <p>€ 150 - 200</p>  |

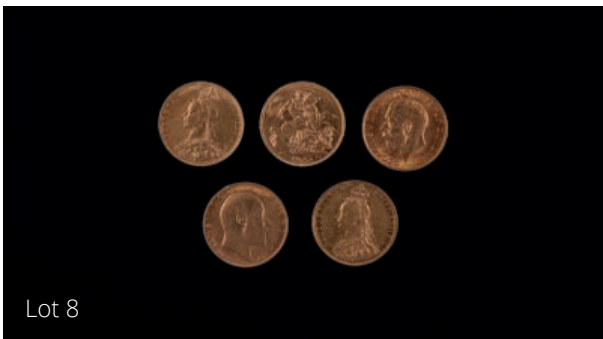




Lot 7

7 TWO MOUNTED GOLD SOVEREIGNS, comprising of a 1907 Edward VII St George reverse sovereign, and a 1913 George V St George reverse sovereign; together with a mounted 1914 George V St George reverse half sovereign (3)

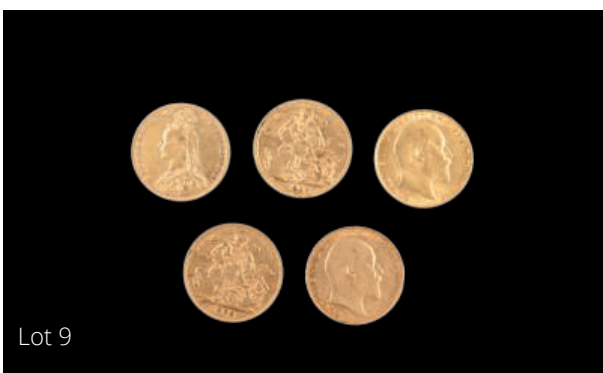
€ 300 - 500



Lot 8

8 A COLLECTION OF FIVE GOLD SOVEREIGNS, comprising of an 1891 Melbourne mint, Victoria Jubilee St George reverse sovereign, an 1892 Victoria Jubilee St George reverse sovereign, a 1905 Perth mint Edward VII St George reverse sovereign, a 1910 Edward VII St George reverse sovereign, and a 1911 George V St George reverse sovereign (5)

€ 400 - 600



Lot 9

9 A COLLECTION OF FIVE GOLD SOVEREIGNS, comprising of an 1891 Victoria Jubilee St George reverse sovereign, a 1903 Melbourne mint Edward VII St George reverse sovereign, a 1906 Edward VII St George reverse sovereign, a 1910 Edward VII St George reverse sovereign, and a 1911 George V St George reverse sovereign (5)

€ 400 - 600



Lot 11

10 A COLLECTION OF SIX MOUNTED GOLD SOVEREIGNS, comprising of a 1908 Edward VII St George reverse sovereign, two 1910 Edward VII St George reverse sovereign, a 1911 George V St George reverse sovereign, a 1912 George V St George reverse sovereign, and a 1913 George V St George reverse sovereign; together with an unmounted 1891 Victoria Jubilee St George reverse sovereign and an unmounted 1911 George V St George reverse sovereign (8)

€ 300 - 500



Lot 12

11 A COLLECTION OF GOLD HALF SOVEREIGNS comprising of an 1865 Victoria young head shield reverse half sovereign, an 1887 Victoria Jubilee shield reverse half sovereign, an 1892 Victoria Jubilee shield reverse half sovereign, an 1895 Victoria old head St George reverse half sovereign, a 1900 Melbourne mint Victoria old head St George reverse half sovereign, a 1902 Edward VII St George reverse half sovereign, a 1908 Edward VII St George reverse half sovereign, and a 1913 George V St George reverse half sovereign (8)

€ 400 - 600

12 A GEORGE III (1760-1820) GUINEA, 1763, second gold laureate head right, crowned quartered shield of arms on reverse

€ 1,200 - 1,500



Lot 13

- 13 A SILVER TRAVELLING TOILETTE SET,  
contained in a black leather case, comprising hand mirror, pair of hair brushes, pair of clothes brushes, comb, six glass jars and a manicure set, London 1937  
€ 300 - 500

- 15 AN EDWARDIAN NAVY BLUE LEATHER CASE  
with fitted interior having silver mounted dressing set comprising a rectangular tray, six various bottles and jars, a pair of hair brushes, a hand mirror and comb, together with lace hook, shoe horn and pair clothes brushes, manicure set, Hallmarks for Birmingham 1913; together with writing folder and a jewellery box and having a leather bound canvas cover. 56 x 38 x 25cm deep  
€ 500 - 800

- 14 A PAIR OF IRISH WILLIAM IV FIDDLE PATTERN SAUCE LADLES,  
London 1830, engraved with crest (2)  
€ 150 - 250

- 16 AN EDWARDIAN SILVER SAUCE BOAT,  
London c.1902 (marks rubbed), with serrated rim, scroll handle, plain body and raised on shell capped hoof feet; together with another later example, London 1938, (c.18ozs). (2)  
€ 200 - 400





Lot 17

17 THREE SILVER SAUCE BOATS, modern Birmingham marks, each of plain pap form, applied 's' scroll handles, raised on reeded oval pedestal feet (c.5ozs). (3)

€ 150 - 200



Lot 18

18 A MATCHED PAIR OF GEORGIAN SILVER HANOVERIAN PATTERN 'BERRY' SPOONS, London 1760, mark of "WJ" and London 1755, makers mark rubbed, each with embossed bowls and chased handles (c.3.5ozs in all). 20cm long

€ 80 - 120

19 A PAIR OF IRISH QUEEN ANNE HANOVERIAN AND RAT-TAIL PATTERN SILVER TABLE SPOONS, Dublin 1706, probably with mark of David King (marks rubbed), of plain decoration, the reverse of the handles crested. 19cm long; together with a pair of Irish George III Hanoverian pattern table spoons, Dublin 1774, mark of John Craig, crested to the reverse fo the handle terminals. 21cm long (c.8.5ozs in all) (4) Provenance: from a private collection, accumulated in the 1970's

€ 400 - 600



Lot 20

20 A GEORGE III SILVER LEAF FORM CADDY SPOON, Birmingham 1800, mark of Cocks & Bettridge. 6.5cm long; together with a Victorian embossed caddy spoon, Birmingham 1890, mark of George Unite, with embossed foliate bowl with loop handle. 7.5cm long (2)

€ 150 - 250



Lot 22

21 A MATCHED SET OF EIGHT VICTORIAN SILVER FIDDLE PATTERN TEASPOONS, London marks, retailed by "WATERHOUSE", each with handle terminal crested and initialed (c.6ozs)

€ 80 - 120

22 AN IRISH GEORGE III SILVER FIDDLE PATTERN SHOVEL FORM CADDY SPOON, Dublin 1817, mark of Thomas Townsend, retailed by LAW; Together with a George IV fiddle and shell pattern shovel form caddy spoon, Newcastle 1825; a Victorian fiddle pattern shovel form caddy spoon, Birmingham 1855, mark of George Unite; and a George II shovel caddy spoon, London marks rubbed (4)

€ 200 - 400

23

A VICTORIAN SILVER SHAPED CIRCULAR SALVER,  
London 1896, mark of Goldsmiths & Silversmiths Co.,  
112 Regent St., London (William Gibson & John Lawrence Langman), with gadroon, scallop and acanthus rim, interposed by anthemias, the plain central reserve with crest and motto "SOLA VIRTUS NOBILITAS" (virtue is the only nobility), raised on three scroll feet (c.32.5ozs). 32cm diameter, 3.5cm high

€ 600 - 800



24

A PAIR OF IRISH SILVER BEAKERS,  
Dublin (no date letter), makers mark possibly that of  
William Homer (fl. 1754-73), each with everted rims  
above conical form bodies with crested and chased  
flower heads and entwined scrolling leaves (c.11ozs).  
Each 9.4cm high, 8.5cm diameter

€ 1,000 - 1,500





Lot 25

25 A GEORGE IV SILVER FIDDLE PATTERN CADDY SPOON,  
London 1831, mark of John, Henry & Charles Lias;  
a George III caddy spoon, with unusual handle,  
London marks, mark of Thomas James;  
and a Victorian fiddle and shell pattern caddy spoon, London  
1860, mark of Chawner & Co (George William Adams) (3)  
€ 150 - 250



Lot 27

26 A SILVER MOUNTED HIP FLASK  
with hide cover, Sheffield 1900, and a late Victorian silver  
plated chamber candlestick and snuffer (2)  
€ 30 - 40



Lot 28

27 A LARGE EDWARDIAN SILVER DRESSING TABLE  
MIRROR,  
Birmingham 1904, of waisted form pierced and  
embossed with flowers and scrolls, with vacant  
cartouche, the easel back covered in moss green velvet, bev-  
elled glass. 47cm high, 39cm wide  
€ 300 - 500

28 AN EDWARDIAN CIRCULAR SILVER FRUIT  
BOWL,  
London 1909, mark of Mappin & Webb, with cast tongue and  
dart rim, lancet pierced sides and raised on three cast winged  
bracket feet (17.5oz). 23.5cm diameter  
€ 250 - 350



Lot 30

29 A SILVER CIRCULAR TWO HANDED TROPHY  
CUP,  
inscribed 'Co. Louth Golf Clubs Annual Inter-Club Champion-  
ship' with reeded body and raised on  
pedestal foot, (c.20 oz)  
€ 150 - 250

30 AN IRISH GEORGE IV SUGAR BOWL,  
Dublin 1828, mark of Edward Power, of lobed circular form  
with twin 'S' scroll handles, all-over repousse chased and en-  
graved foliate decoration and raised on shell cast feet (19.5oz).  
22cm wide over handles.  
€ 200 - 300

- 31 AN IRISH SILVER DISH RING,  
Dublin 1933, mark of T.W., of waisted circular form,  
with pierced repousse Celtic decoration in the form of  
exotic creatures and with interlaced scrollwork, blue  
glass liner (15.5oz). 11.9cm high, 20.3cm diameter

€ 800 - 1,200

- 32 A CASED SET OF SILVER TAPER HANDLE  
TEA SPOONS  
with twin golf club motifs. Sheffield 1993, in a fitted  
case

€ 40 - 60

- 33 A MODERN SILVER SMALL BOTTLE  
COASTER  
with reeded banding, timber base, London marks,  
Carrs of Sheffield, and a set of six gilt plated pastry  
forks (7)

€ 40 - 50

- 34 A LATE VICTORIAN SILVER MONTEITH  
PUNCH BOWL,  
London 1899, mark of William Hutton & Sons, with  
cast wavy rim and applied strapwork, raised on plain  
circular pedestal foot (51oz). 29cm diameter, 20cm  
high

€ 400 - 600

- 35 A SILVER RECTANGULAR CIGARETTE  
BOX,  
Birmingham 1947, the lid with engine turned  
decoration and with Celtic pattern banding, inscribed  
presentation to J. J. Hickey, Brown Thomas & Co Ltd.  
1948. 11x16cm;  
Together with an engine turned silver cigarette case,  
Birmingham 1935 (c.6oz) (2)

€ 80 - 120







Lot 36

36 A LATE VICTORIAN SILVER MOUNTED HEART SHAPED BOX,  
London 1898, mark of William Comyns, with hinged domed lid and body covered in deep blue velvet, above a repousse band decorated with birds, flowers and scrolls. 12cm high, 20cm wide  
€ 250 - 350



Lot 38

37 A CASED SET OF SIX SILVER FEATHER EDGE COFFEE SPOONS,  
London 1940;  
Together with a cased Victorian Christening knife and fork, Sheffield 1871;  
Together with an Irish silver fiddle pattern table spoon, Dublin 1812;  
Together with another silver spoon (5)  
€ 80 - 100

38 A MODERN IRISH SILVER TWELVE PANEL STRAWBERRY DISH,  
Dublin 1961, mark of William Egan of Cork, having deep sides and the reserve with engraved Celtic banding (9.5oz). 17.5cm diameter  
€ 200 - 400



Lot 39

39 A MODERN IRISH SILVER SHAPED CIRCULAR BON BON DISH,  
Dublin 1971 with pierced panels;  
together with a white metal long shaped rectangular pen tray with beaded border and raised on four feet. 21cm long (2)  
€ 80 - 120



Lot 40

40 AN EDWARDIAN SILVER CIRCULAR CARD TRAY,  
Birmingham 1906, mark of W.A. in oval, the cast raised border with shell and bead decoration,  
bellflower banding and enclosing an engraved reserve, raised on claw and ball feet (9oz). 22cm diameter  
€ 120 - 180



Lot 42

41 A CASED SET OF SIX ART NOUVEAU SILVER TEASPOONS,  
Sheffield 1911, mark of James Deakin and Sons, the tapering handle with floral decoration; together with three silver plated items (9)  
€ 100 - 150

42 A VICTORIAN SILVER SHAPED CIRCULAR PRESENTATION SALVER,  
London 1877, mark of Martin, Hall & Co., with raised cast border, beading and scrollwork, the reserve engraved and inscribed with an 1887 presentation to V. Rev. Canon Hoare, raised on claw and ball feet (17oz). 24cm diameter  
€ 150 - 250



- 43 AN IRISH GEORGIAN SILVER SHAPED RECTANGULAR SUGAR BOWL, Dublin 1806, with twin handles (c.15oz); and a matching cream jug, decorated with bright cut banding and cartouches on shallow rim feet. (2)  
€ 400 - 600



Lot 43

- 44 A VICTORIAN SILVER TWIN HANDLED SUGAR BOWL, Chester 1898, of oblong form, with feather edge rim, and raised on bun feet. (c. 6.5oz).  
€ 100 - 200

- 45 AN IRISH GEORGE III SILVER SUGAR BOWL, Dublin 1798, makers mark partially rubbed, with punched beaded lip and body with alternating spiral flutes, raised on shell capped hoof feet 12.8cm diameter (c. 5.5oz)  
€ 400 - 600

- 46 A COLLECTION OF FOUR MODERN SILVER MUSTARD POTS, comprising: an octagonal panelled mustard pot, Birmingham 1912-1913, marks rubbed, probably that of Wilmot Manufacturing Co.; an urn-shaped mustard pot, Birmingham 1915-1916, mark of S. W. Smith & Co.; and an oval shaped mustard pot, Chester 1903-1904, mark of George Nathan & Ridley; a circular shaped mustard pot, Sheffield 1900-1, mark of James Dixon & Sons Ltd.; each with hinged lid, applied c-scroll handle, blue glass liner and silver mustard spoon. (c.10oz in all) (8 items, including spoons)  
€ 150 - 200



Lot 45

- 47 A GEORGIAN SILVER COFFEE POT, London 1786, mark of R.G., of plain tapering form, having domed top with turned finial and applied walnut handle (c.14oz), 20cm high  
€ 600 - 800



Lot 46



Lot 47



Lot 48

48 A RECTANGULAR SILVER CIGARETTE BOX, Chester 1922-23, mark of Sydney & Co., with hinged lid and plain body, a timber lined interior and shagreen base (c.12oz. including lining). 13.3cm long x 8.6cm wide x 5.2cm high

€ 100 - 150



Lot 48

49 AN ART DECO SILVER TEAPOT, Sheffield 1939, of octagonal form, with walnut handle and finial, raised on paw feet (c.19oz incl. handle and finial)

€ 200 - 400



Lot 50

50 AN ART DECO BULLET SHAPED SILVER TEAPOT, Birmingham 1947, of plain decoration, with bakelite handle and finial, raised on a stepped circular foot (c.16oz incl. handle and finial)

€ 300 - 500

51 AN EARLY 20TH CENTURY SILVER CYLINDRICAL CHRISTENING MUG, initialled, Chester 1910, with repousse foliate decoration; Together with a waisted cylindrical Christening mug, Chester 1909, with inscription; Together with a circular baluster Christening mug, Birmingham 1913, with inscription (c.19oz all in) (3)

€ 150 - 250



Lot 52

52 A NOVELTY SILVER BON BON DISH, Birmingham marks, in the form of a wheelbarrow with pierced arabesque decoration; Together with a continental white metal boat shaped sweetmeat dish, stamped '800', with repousse decoration and with winged putto handle. (2)

€ 80 - 120



Lot 53

53 AN IRISH SILVER REPLICA TROPHY CUP, Dublin 1934, in the Celtic pattern; Together with an Irish three handled replica trophy cup, Dublin 1928; Together with another Irish replica trophy cup, Dublin 1929 (c.17oz) (3)

€ 80 - 120

- 54 A SMALL IRISH SILVER DISH RING  
IN NEO-CLASSICAL TASTE,  
Dublin 1916, makers mark of T Weir & Sons, retailed Weir &  
Sons, of waisted circular form, the pierced  
fluted body decorated with continuous chased garlands and  
with birds in flight over each (c.6.5oz) 12.6cm diameter; with  
blue glass liner
- € 800 - 1,200



- 55 A VICTORIAN CREAM JUG AND MATCHING SUGAR  
BOWL,  
Birmingham 1888, of circular form with pinched rim, spiral  
reeded banding and wavy fluting (c.5oz)
- € 80 - 120



- 56 A VICTORIAN SHAPED CIRCULAR SILVER  
SALVER,  
London 1842, mark of Charles Reily and George  
Storer, with wavy piecrust rims, chased scrolling leaves, en-  
graved central reserve of foliage and  
scrollwork enclosing crest to centre, and raised on scroll feet (c.  
14 oz). 17cm diameter
- € 300 - 500



- 57 A SILVER PHOTOGRAPH FRAME WITH REPOUSSE  
BELLFLOWER BORDER,  
Birmingham;  
Together with another silver photograph frame;  
Together with a silver replica trophy in the form of a spill vase;  
Together with a Georgian style sugar caster, Chester 1908  
(c.6.5oz weighable silver) (4)
- € 80 - 100

- 58 A SILVER THREE PIECE TEA SERVICE,  
Sheffield, comprising teapot, sugar bowl, cream jug, each of  
oblong form, with bead and reel edge,  
bulbous bodies and raised on paw feet (c.45.5ozs).
- € 500 - 700



Lot 59

59 A MODERN IRISH SILVER WAVY HEXAGONAL DISH,  
Dublin 1973 Commemorative EEC mark, mark of Royal Irish Ltd., the pierced sides decorated with foliate arabesques (9.5oz). 23.4cm diameter

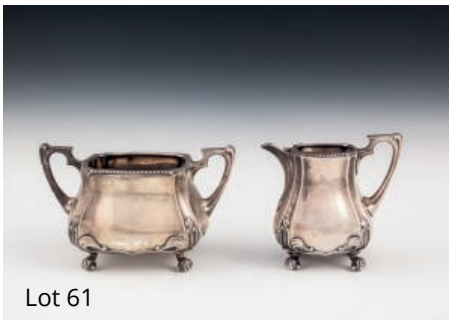
€ 150 - 250



Lot 60

60 A SILVER RECTANGULAR CIGARETTE BOX,  
Birmingham 1940, the lid with engine turned decoration, Belvedere crest and inscribed "Old Belvedere Golfing Society, Captains Prize 1940", 9x16cm; Together with an Edwardian silver cigar case, Birmingham 1907, with engraved scrollwork decoration, with initials;  
Together with an Art Nouveau rectangular cigarette case, the lid decorated with flowers and head of a young woman, stamped '800' and 'Silver'. (3)

€ 100 - 150



Lot 61

61 AN EDWARDIAN SILVER CREAM JUG AND MATCHING SUGAR BOWL,  
London 1903, retailed by West & Son, of shaped rectangular baluster form with gadroon rims, scroll decoration and raised on scroll feet (c.19oz)

€ 150 - 200



Lot 62

62 A RECTANGULAR SILVER TEA CADDY,  
Chester 1910, with repousse figural decoration in the Dutch taste. 8.5cm high;  
together with an oval tea caddy, Birmingham 1910, similarly decorated (7oz all-in) (2)

€ 120 - 150



Lot 64

63 TWO SIMILAR GEORGIAN STYLE OVAL SAUCE BOATS,  
Chester 1908, and London 1907, with wavy rim, leaf capped 'S' scroll handles and raised on shell and pad feet (16oz all-in)

€ 150 - 200

64 A PAIR OF EDWARDIAN SILVER CIRCULAR SALTS,  
Birmingham 1905, of baluster form with repousse foliate decoration on three shell and pad feet, blue plastic liners;  
together with a large plain oval sauce boat with reeded rim, Birmingham 1915 (3)

€ 100 - 150



- 65 A LARGE SILVER DISH RING,  
Birmingham 1914-1915, mark of Williams  
(Birmingham) Ltd., of typical waisted circular form, with  
pierced fluted sides and chased swags, with blue glass liner  
(c.9.5ozs). 18cm diameter

€ 1,000 - 1,500

- 66 AN IRISH GEORGE IV SILVER SERVING  
SPOON,  
Dublin 1823, mark of Samuel Beere and William Law, with  
plain fiddle handle and rat-tail;  
Together with another similar Irish George IV serving spoon,  
Dublin 1825, mark of T. Farnett; both initialled (10oz all-in) (2)

€ 150 - 250



Lot 65

- 67 AN IRISH EDWARDIAN SILVER DISH  
RING,  
Dublin c. 1908 (date mark rubbed), mark of James Wakely and  
Frank Clarke Wheeler, of waisted circular form, with blue glass  
liner, the pierced body  
decorated with animal forms, birds, foxes and dogs, amongst  
intertwined foliage and scrolls, enclosing a plain cartouche (c.  
8ozs). 8cm high , 18cm diameter

€ 600 - 1,000

- 68 A PAIR OF IRISH GEORGIAN STYLE SILVER SAUCE  
BOATS,  
Dublin 1908, mark of C.L., with wavy rim, 'S' scroll handle and  
raised on shell and pad feet (9.5oz)

€ 150 - 200



Lot 67





69 AN IRISH GEORGE III SHAPED CIRCULAR SALVER,  
Dublin 1775, with gadroon rim and reserve engraved  
with armorial, raised on three paw feet (c. 26.5ozs).  
29cm diameter

*Provenance: collection of the late Louis Kinlen. Sold  
these rooms, 12th March 2008, Catalogue no. 45, where  
purchased by present owner*

€ 700 - 1,000

70 A PAIR OF VICTORIAN SILVER TABLE  
CANDLESTICKS,  
Sheffield 1879, with neoclassical urn shaped sconces,  
raised on square tapering pillars on square spreading  
bases (weighted), decorated with ferns, foliate and  
ribbon swages, ram's heads etc. 33.5cm high (2)

€ 1,200 - 1,500



Lot 70

71 A GEORGE II SHAPED CIRCULAR SILVER  
WAITER,  
London 1937, mark of John Tuite, with scroll work  
rims, plain central reserve and raised on scrolling  
hoof feet, (c.7ozs). 16cm diameter

€ 300 - 500



72 AN EDWARDIAN SILVER AND CUT GLASS CENTREPIECE,  
London 1905, the fitted glass bowl with wavy rim, on a raised stand with beaded ornament and tapering  
supports, joined by concave undertier and raised urn finial (c. 26.5 ozs). 26cm high, 30cm wide

€ 800 - 1,200



73 A GEORGE III THREE-PIECE SILVER  
TEA-SERVICE,  
by Robert and Samuel Hennell, London, 1803, of  
circular form, each with semi-fluted bodies, applied  
with reeded handles and borders and circular foot,  
(35 ozs)

€ 600 - 800



74 AN EDWARDIAN SILVER THREE PIECE TEA  
SERVICE,  
Birmingham, comprising of teapot, sugar bowl and  
cream jug, each of oval panelled form, with beaded  
rim

€ 300 - 500



75 A FRENCH SILVER ENGRAVED CAKE  
SLICE,  
.950 Standard, stamped with '1ER TITRE' mark, the  
slice with pierced engraved foliate decoaration, the  
tapered handle decorated with ribbons and the  
handle terminal engraved with initials 'DC' (c. 2.5 ozs).  
27.3cm long

€ 150 - 250



76

A VICTORIAN SILVER REPOUSSÉ  
CLARET JUG,  
London 1878, makers mark Stephen Smith,  
decorated in the renaissance style, chased and  
embossed with masks, animals and scrolls,  
applied with s-scroll handle, on circular foot

€ 2,000 - 3,000



- 80 A SILVER PLATED TABLE CENTREPIECE IN THE NEO-CLASSICAL TASTE, with frosted and etched glass bowl raised on a circular stand with rams heads and cast pierced border on three scroll legs and with foliate swags on a triangular base with beaded rim, on a circular mirror top platform with conforming decoration. 37cm diameter, 35cm high overall

€ 150 - 200



- 81 A VICTORIAN SILVER PLATED TWO DECANTER TROLLEY, the articulated handle cast in a naturalistic fashion, the cast wirework coasters with timber bases and raised on cast Roman style cart-wheels. 52cm long

€ 100 - 150



- 82 A 19TH CENTURY OLD SHEFFIELD SILVER PLATED THREE PIECE TEA SERVICE, comprising teapot, sugar bowl and cream jug, each of oval form, decorated with fruiting vine borders (3)

€ 100 - 200



- 83 A CASED SET OF LATE 19TH CENTURY NAPKIN RINGS, and a group of assorted condiments

€ 80 - 120



- 84 A COLLECTION OF SILVER AND SILVER PLATED OPEN FACED POCKET WATCHES

€ 100 - 200





100    STYLE OF JAMES ARTHUR O'CONNOR  
(1792-1841)  
Figure crossing a bridge  
Oil on panel, 20 x 25.5 cm (8 x 10")

€ 1,500 - 2,500



101 STYLE OF HUGH DOUGLAS HAMILTON  
(1740-1808)  
Portrait of a Young Gentleman, Wearing a Black Coat  
Pastel, 24 x 19cm, oval

€ 300 - 500



102 WILLIAM BROCAS (1794-1868)  
Travellers on horseback  
Watercolour, 30 x 44 cm  
Signed

€ 500 - 800



103 MANNER OF SEBASTIAN PETHER  
(19TH CENTURY)  
Moonlit lake and mountain landscape  
Oil on canvas, 59 x 77cm  
Signed indistinctly

€ 500 - 1,000



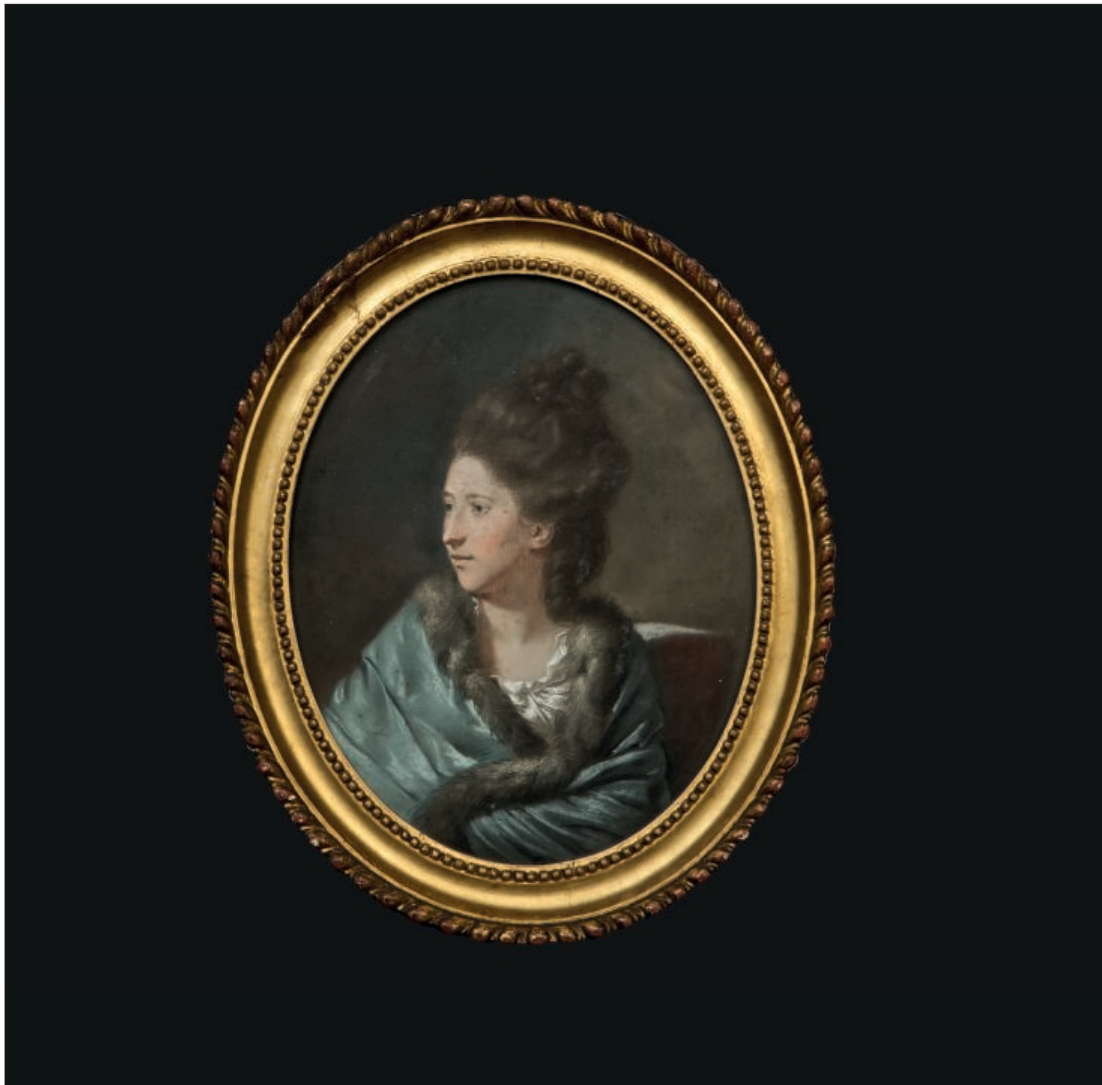
104 THOMAS BUSH HARDY  
(1842-1897)  
On the Grand Canal, Venice  
Watercolour, 23.5 x 52.5cm  
Signed and inscribed with title

€ 500 - 800



105 CARL GESSNITZER  
(19TH CENTURY)  
Dutch Harbour Scene  
Oil on canvas, 50 x 91cm  
Signed

€ 500 - 800



106 HUGH DOUGLAS HAMILTON  
(1739-1808)

A Portrait of Mary Preston

Pastel and crayon, oval, 27 x 21.5cms (10.6 x 8.5")

In gadroon gilt wood frame, with a contemporary paper label verso, "Mary Preston youngest daughter of the Hon. Henry Hamilton", also with a later (19th century) label giving a misleading identification and attribution to Rosalba Carriera.

Mary Hamilton married in 1764 (as his second wife) Nathaniel Preston of Swainston, Co. Meath. Her father was a younger son of Viscount Boyne of Stackallan, Co. Meath, and her parents were intimate with Mrs Delaney, who of them said - "I never saw a couple better suited than Mr Hamilton and his wife, their house like themselves looks cheerful and neat...., they have four children, whose behaviour shows the sense of their parents". Mary's brother, Sackville Hamilton became a competent and respected Civil Servant.

*Provenance: Christie's 01/06/1928 Lot 30 (18 guineas) bought by John Maher, Bloomfield, Enniscorthy, thence by descent. Adam's, Important Irish Art 28/09/2005 Lot 25 (€8,200) ,*

€ 5,000 - 8,000



Lot 107

- 107 NASSAU BLAIR BROWNE, RHA  
(1867-1940)  
'Ginger', Portrait of a chestnut horse in a stable  
Oil on canvas, 51 x 61cm (20 x 24")  
Signed and inscribed  
€ 1,500 - 2,000



Lot 108

- 108 WILLIAM BINGHAM MCGUINNESS RHA  
(1849-1928)  
A Continental Street Scene with Cathedral  
Watercolour, 52.5 x 27cm (20½ x 10½")  
€ 600 - 800

- 109 WALTER GOODALL RA  
(1830 - 1889)  
Children playing on a see-saw in the woods  
Watercolour, 34 x 47cm  
Signed and dated 1865

*Provenance: With Heather Newman, Painswick, Glos.*

€ 500 - 800



Lot 109

- 110 ERNEST STUART (FL.1889-1915)  
Fishing Boats off Boulogne  
Watercolour, 55cm x 39cm  
Signed  
€ 400 - 600



111 ATTRIBUTED TO JOHN FREDERICK  
HERRING SENIOR (1795-1865)  
Horses Feeding with Fowl  
Oil on canvas, 24 x 34cm  
Signed

€ 1,500 - 2,500



112 JAMES HUGHES CLAYTON  
(FL. 1891-1929)  
Coastal scene with fisherfolk and sailing boats  
Watercolour, 28 x 51cm  
Signed

€ 300 - 400



113 NO LOT

114 JAY KILLIAN (1866-1949)  
The Fiddle and the Woman at the half door  
A pair, pen and ink, 30 x 26cm  
Signed and dated 1880

€ 300 - 400





115 GEORGE JONES RA (1786-1869)  
Kenmare River, Co. Kerry  
Monochrome watercolour, 20 x 29cm  
€ 300 - 500



116 19TH CENTURY SCHOOL  
Shipwreck  
Watercolour, 22 x 40cm  
€ 300 - 400



117 VICTORIAN SCHOOL  
Three Boys Playing  
Oil on canvas, 29 x 24cm  
Bearing signature 'W. Mulready' and date '1859'  
€ 100 - 150



118 VICTORIAN IRISH SCHOOL  
Ross Castle, Killarney and  
St. Finbar Island, Cork  
A pair, watercolour, 18 x 15 cm  
Inscribed  
€ 300 - 500

- 119 SIR ALFRED EAST (1849-1913)  
Wooded Landscape with two figures at dusk  
Oil on canvas, 52 x 68cm  
€ 2,000 - 3,000



- 120 ENGLISH SCHOOL (C.1820)  
Portrait of a young girl in a landscape, holding a book  
Oil on canvas 76 x 62cm  
Indistinctly signed bottom right  
€ 800 - 1,200



- 121 E. PROCTOR  
A collection of watercolours depicting bog land  
scenes in the West of Ireland  
17 x 25 cm, similar sizes (7)  
€ 700 - 1,000





122 ENGLISH SCHOOL  
(19TH CENTURY)  
Portrait of John Green Daley Esq., half-length, seated,  
Oil on canvas, 109 x 86cm  
The gilt frame with inscription: "Presented on the Oc-  
casion of his retirement from the management of the  
Bowling Iron Works, with which he was connected for  
50 years, by the agents and workmen, May 9th 1842"  
€ 400 - 800



123 GERMAN SCHOOL  
(19TH CENTURY)  
Portrait of a young lady with flower basket  
Oil on zinc panel, oval, 21 x 16.5cm  
Within elaborate gilt frame  
€ 400 - 600



124 DUTCH SCHOOL,  
17TH/18TH CENTURY  
Manner of Jan Weenix, Early 18th Century  
Dog Guarding dead game bird  
Oil on canvas, 32 x 27cm  
€ 400 - 600





125 SIR GERALD FESTUS KELLY RHA  
(1879-1972)  
Portrait of a Lady Seated  
Oil on canvas, 75 x 62cm

€ 1,000 - 1,500



126 ELIZABETH RIVERS (1903-1964)  
Woman with Harp  
Pencil, 44.5 x 37cm

*Provenance: From the Artist's Estate*

€ 250 - 350



127 EVIE HONE HRHA (1894-1955)  
Study for San Damiano  
Gouache, 155 x 35cm

€ 500 - 700



128 ARTHUR SPENCER ROBERTS  
(1920-1997)  
Wooded lake scene  
Oil on canvas, 77 x 50cm  
Signed

€ 400 - 600



129 HELEN BRADLEY (1900-1979)  
Blackpool Sands and other works  
Five coloured prints, 50 x 63cm and similar sizes  
Signed (5)

€ 800 - 1,200

130 DAME LAURA KNIGHT (NEE JOHNSON)  
(1977-1970)  
Nude bathers  
Watercolour, 50 x 68cm  
€ 2,000 - 4,000



131 THOMAS ROSE MILES RCA  
(FL.1869-1910)  
Wind and Sea Rising, Evening Yarmouth Roads  
Oil on canvas, 39.5 x 65cm  
Signed. Inscribed with title verso. GW Knight framing label verso.  
€ 1,200 - 1,500



132 CHINESE SCHOOL  
(20TH CENTURY)  
Cranes by prunus and pine  
Gouache, a pair, 25 x 43cm and 25 x36cm  
Signed

€ 200 - 300



133 A CHINESE CORAL GROUND ENAMEL VASE  
OF OVID FORM  
decorated with magpie and prunus. 14cm high;  
Together with two Japanese glazed pottery wares  
each decorated with figures in relief. (3)

€ 200 - 300



134 A CHINESE BLUE AND WHITE TALL  
CYLINDRICAL PORCELAIN BEAKER  
VASE,  
with flared rim decorated with all-over foliage and  
flower heads. 46cm high, 20cm diameter

€ 400 - 700



135 A CHINESE BLUE AND WHITE PORCELAIN  
CIRCULAR CHARGER,  
the reserve painted with a bird in a landscape, within  
a diamond lattice and floral panel border. 37.5cm  
diameter

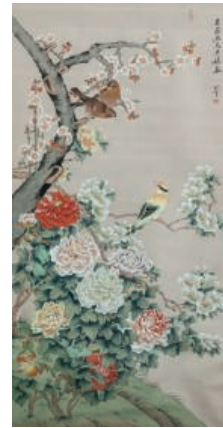
€ 200 - 400





- 136 CHINESE SCHOOL  
(20TH CENTURY)  
Songbirds and Chrysanthemum blooms  
Gouache on silk panel, 115 x 55cm  
Signed

€ 1,000 - 2,000



- 137 A 19TH CENTURY YELLOW GLAZED  
CHINESE VASE,  
decorated with polychrome ho - ho birds and floral  
designed , converted to a lamp

€ 300 - 500



- 138 CHINESE SCHOOL  
Songbird and sparrows perched on a flowering plum  
tree  
Gouache, 129 x 66cm  
Signed

€ 1,500 - 2,500



- 139 A CHINESE CHERRYWOOD ALTAR  
TABLE,  
with moulded top above a plain shaped frieze on  
square tapering legs with spade feet. 165 x 84 x 43cm

€ 1,000 - 1,500





Lot 140

- 140 JOHN RAPHAEL SMITH  
(1752-1812)  
After George Morland 'The Fern Gatherers'  
Mezzotint, 46 x 61cm;  
together with a collection including 'The Warrener';  
'Sunday Morning Peasants Going to Church'; 'Return from  
the Market'; 'Swarming in the Bees'; 'The Angler's Repast';  
'Inside of a Country Ale House' and  
'Dorethea'.  
All framed similarly in verre eglomise/frames (8)

€ 500 - 1,000

- 141 A LETZLAR BRASS AND CAST IRON  
MICROSCOPE,  
c.1894, stamped with makers mark and serial 189452

€ 200 - 400

- 142 A BRASS FRAMED MICROSCOPE  
by J Swift and Son, London

€ 200 - 400



- 143 AN EDWARDIAN STAINED WOOD PIPE  
SMOKER'S CABINET  
with single glazed panel door enclosing a single  
drawer, the sides with folding pipe racks, 32cm high,  
22cm wide; together with a collection of Peterson of Dub-  
lin hand-crafted pipes and miscellaneous effects

€ 100 - 150

- 144 A WILLIAM IV MAHOGANY FRAMED  
DOUBLE SCROLL END SOFA WITH ARCHED  
BACK,  
the frame profusely carved with acanthus leaves, scrolls  
and square bosses, raised on acanthus carved bracket  
supports and lobed feet. 220cm wide

€ 500 - 800

Lot 141



Lot 144

- 145 ATTRIBUTED TO DANIEL MACLISE RA HRHA  
(1806-1870)  
Figurative sketches - Three women and three men  
A collection of six  
Oil on paper, 14 x 6 cm and similar sizes  
Framed as two

€ 1,000 - 2,000



- 146 A 19TH CENTURY PARTIALLY PAINTED  
BRONZE MODEL OF A RUNNING DOG  
WITH MONKEY JOCKEY ASTRIDE,  
raised on an octagonal base

€ 50 - 60



- 147 A RED LEATHER THREE SEATER  
CHESTERFIELD SOFA,  
20th Century, with characteristic deep buttoned  
upholstery and scroll arms, raised on castors. 72cm  
high, 200cm wide

€ 300 - 500



- 148 A COLLECTION OF VARIOUS  
CHESSMEN,  
in colours, and a set of carved and turned wood  
chessman in a two compartment  
'Staunton Chessman' mahogany box

€ 400 - 500

- 149 A MODERN BURR WALNUT RECTANGULAR  
CIGAR BOX  
and a modern mahogany humidor (2)

€ 60 - 80



150 A CASED SET OF LIGNUM VITAE CARPET BOWLS, THE CASE OF UPRIGHT RECTANGULAR FORM, the slide front door enclosing four bowls, each stamped with competition marks and labelled 'Desborough Bowling Club'. 54.5cm high

€ 300 - 500



Lot 150



Lot 151

151 AN EDWARDIAN MAHOGANY AND SATINWOOD INLAID REVOLVING BOOKCASE, the crossbanded top with inlaid central medallion and moulded stepped edge above two compartmented tiers with slatted supports. 86cm high

€ 250 - 350

152 AN EDWARDIAN OAK METAMORPHIC CHAIR, c.1900, with fold over forelegs transforming to library steps, with solid panel seat and and back caved with a lozenge and central rosette. 90cm high

€ 300 - 400

153 A MODERN BRASS FIVE LIGHT ELECTROLIER, the circular stem having plain 'S' branches, 48cm long, Together with a pair of matching two light wall sconces

€ 150 - 200



Lot 153

154 AN EDWARDIAN INLAID SATINWOOD RECTANGULAR NEST OF QUARTETTO TABLES, the tops with inset oval mahogany panels and raised on slender banded column legs. 49 x 34,5 cm

€ 500 - 800



Lot 154



Lot 153





155 A 19TH CENTURY MAHOGANY FRAMED OCTAGONAL GOUT STOOL, the padded top with ratcheting tilt mechanism and raised on paw feet. 43 x 31 cm

€ 400 - 600



156 A PAIR OF GEORGIAN STYLE UPHOLSTERED WINGBACK ARMCHAIRS covered in green and gold lattice pattern and raised on mahogany cabriole legs

€ 600 - 800



157 A LARGE CONTINENTAL STYLE BRASS SEVEN LIGHT ELECTROLIER, the baluster stem having scroll arms and plain circular sconces. 68cm long

€ 300 - 500

158 A PAIR OF REGENCY CAST METAL FIGURES OF SPHINX on platform bases inset with brass bas-relief figural frieze on a base with incised gilt-picked foliate scrollwork. 28cm high, 30.5cm long, 12cm deep

€ 400 - 600



159 AN EARLY VICTORIAN 19TH CENTURY ROSEWOOD AND BRASS MOUNTED DAVENPORT, THE RECTANGULAR GALLERY ABOVE A SLOPEFRONT LEATHER INSET PANEL ENCLOSING FITTED INTERIOR, WITH A ROW OF SHORT DRAWERS TO ONE SIDE AND OPPOSING FALSE DRAWERS

€ 300 - 500



Lot 160

160 A GEORGE III MAHOGANY AND CROSSBANDED PEMBROKE TABLE,  
c.1810, the drop leaf sides with rounded corners on turned centre column and reeded downswept legs, with brass castors, 92cm wide

€ 400 - 600

161 A SET OF SEVEN 19TH CENTURY COPPER HAYSTACK MEASURES,  
of graduating sizes, each with beaked rim and scroll handle, struck with corresponding inspection marks, the largest 31cm high

€ 300 - 500



Lot 161



162 A PAIR OF GEORGE IV MAHOGANY HALL CHAIRS,  
each with waisted panel back, carved with acanthus top rail and recessed shield reserve, solid panel seat and turned, fluted supports

€ 400 - 600

Lot 162

163

EDWIN HAYES RHA RI ROI  
(1819-1904)  
Shipping off the Coast at Genoa  
Oil on canvas, 76 x 127cm (30 x 50")  
Signed

€ 6,000 - 8,000



164

A STRAHAN OF DUBLIN MID VICTORIAN  
ROSEWOOD SHAPED CIRCULAR DINING  
TABLE  
with wavy rim and raised on turned scrolled centre  
pillar tripod supports terminating in scroll feet. 140  
cm diameter

€ 3,000 - 5,000





Lot 165

165 A FRENCH GILT BRONZE ENCRIERS IN THE LOUIS XV STYLE, late 19th century, by Maison Millet à Paris, the shaped dish formed by leaf scrolls having twin hinged ink wells with foliate finials, stamped to the side 'Millet, Paris'. 28.5 x 18cm

€ 1,500 - 2,500



Lot 167

166 A COLLECTION OF THREE VINTAGE GREEN GLASS WINE BOTTLES, including a Jeroboam (5 litres) labelled 'Lynch Bages' 1983, Chateau Montrose 1982 and another 300cl example (3)

€ 200 - 400

167 A SELECTION OF VICTORIAN BRASS MOUNTED COPPER DISHES, PANS, WARMING PAN and a large circular domed dish etc.

€ 200 - 300



Lot 168

168 TWO PEWTER TABLE CANDLESTICKS, a pewter tankard and an oriental pewter tea caddy (4)

€ 300 - 400



Lot 169

169 A COLLECTION OF COLOURED GLASSWARE, including a clear blue and gilt overlaid pitcher by Karlsbad, a Venetian style olive green armorial cup and a metal stand. (3)

€ 200 - 400



- 170 A CHINESE CELADON PORCELAIN VASE,  
19th Century, of baluster form, with flared rim above archaic style handles, decorated with scholars by rocks and pine, picked out in blue and white relief, now converted to a table lamp

€ 400 - 600



- 171 A COLLECTION OF LATE JAPANESE IMARI PORCELAIN,  
including a pair of lattice border circular dishes, an oval lobed bowl, and two oval dishes, decorated in the traditional taste (5)

€ 200 - 300



- 172 A JAPANESE ENAMELLED PORCELAIN PUNCH BOWL,  
19th Century, decorated in Imari tones, with barbed rim, painted with groups of birds, stylised flowers and rockwork, repeated to the exterior (36cm diameter)

€ 300 - 500



- 173 A PAIR OF CHINESE BRONZED METAL TABLE LAMPS  
of circular baluster form, decorated with coiled dragons, birds and foliage in relief and raised on circular pad feet, adapted for electricity. 30.5cm high

€ 200 - 300





Lot 174

174 A 19TH CENTURY STYLE RECTAGULAR GILTWOOD AND GESSO OVERMANTLE MIRROR,  
the frieze with applied moulded drapery, above a tri-compartmented mirror, the central oval plate surmounted with floral tied swags and putto, flanked by four fluted Corinthian pilasters. 85 x 152cm

€ 300 - 500



Lot 175

175 A CIRCULAR COPPER FUEL CONTAINER,  
with applied lion mask drop down handles, riveted banding, raised on three lion paw feet. 39cm high

€ 100 - 200



Lot 176

176 A PINK MARBLE PEDESTAL,  
the blocked and tapering column supporting a revolving platform, with gilt metal swagging and gadrooning, the shaft applied with an amorini, on moulded stepped base. 30cm square, 103cm high

€ 400 - 600

177 AN EDWARDIAN ROSEWOOD AND MARQUETRY INLAID ENVELOPE CARD TABLE,  
c.1900, the fold out top inlaid with opposing classical urns and enclosing a baize lined interior, on square tapering supports joined by a square undertier.

€ 200 - 300



Lot 177

178 AN ART NOUVEAU MAHOGANY MUSIC CABINET,  
c.1900, of upright rectangular form, the plain moulded top with three quarter gallery back, above four fall front shallow drawers and compartmented undertier, raised on bracket supports.

€ 300 - 500



Lot 178

179 A SET OF TEN GEORGIAN STYLE MAHOGANY DINING CHAIRS, 20th Century, in the Chippendale style, comprising of two carvers and eight single chairs, each with wavy top rail carved with central scallop shell over a pierced splat, upholstered drop-in seat, on cabriole legs and claw and ball feet (10)

€ 500 - 800



Lot 179



180 A WILLIAM IV STYLE MAHOGANY RECTANGULAR WRITING TABLE, the top with inset gilt-tooled leather scriver above a frieze combination of drawer and false drawers and raised on turned fluted tapering legs. 120.5 x 70cm

€ 500 - 600

Lot 180

181 A GEORGIAN STYLE WALNUT FRAMED UPHOLSTERED WINGBACK ARMCHAIR with exposed frame and crest rail with shell motif, covered in cream and blue material and raised on short cabriole legs

€ 300 - 500



182 A GEORGE III BRASS BOUND MAHOGANY RECTANGULAR WRITING BOX with inset strapwork and edging, the top with vacant cartouche in arabesque form. 46 x 26.5 x 19cm high

€ 250 - 350



183 A VICTORIAN BRASS FRAMED WIRE SPARK GUARD, 102cm wide, 45cm high, and a Victorian brass framed wire curb fender, 84cm wide. (2)

€ 300 - 400



184 AN EARLY 19TH CENTURY MAHOGANY FRAMED RECTANGULAR STOOL with needlework top and raised on leaf carved reeded tapering legs. 86 x 52 cm

€ 600 - 800

185 A VICTORIAN BRASS RECTANGULAR CURB FENDER with reeded band. 123 cm long

€ 300 - 400



186 AN EARLY 19TH CENTURY INLAID ROSEWOOD AND SATINWOOD DRESSING TABLE MIRROR on folding top base with fitted interior having jewellery compartments and boxes, surmounted with a crutch frame mirror supported by turned pillars, the entire raised on turned bun feet. 60cm wide

€ 300 - 500





187 AN IRISH BREAKFRONT MAHOGANY BOOKCASE,  
c.1920, in the manner of James Hicks, fitted with cavetto cornice above a narrow blind fretwork band, and  
four astragal glazed doors, enclosing a shelved interior, the base with four fielded panel doors and outside  
plinth base. 194cm wide x 213cm high

€ 2,000 - 3,000



Lot 188

188 A 19TH CENTURY CARVED AND STAINED OAK FRAME ARMCHAIR, the upholstered padded back, armrests and seat covered in tapestry cloth, the frame decorated with scrollwork and blind fretwork, the armrests terminating in animal masks and raised on 'X' shaped supports

€ 300 - 400

189 A 19TH CENTURY STYLE TAPESTRY CLOTH HANGING DOOR SURROUND, with fleur de lys style pattern and having tassled border. 216 cm wide, 147 cm long, suspended from a brass mounted gilded wood curtain pole with cast foliate terminals. 246 cm long

€ 400 - 600

190 A CARVED STONE FIGURAL REPRESENTATION OF THE FOUR SEASONS. 42cm high

€ 700 - 800



Lot 190

191 A SET OF SIX CAST BRASS APPLIQUES in the form of rams heads and a stamped copper shaped-oval cartouche applique with a horse racing vignette (7)

€ 80 - 100



Lot 191

192 A MINIATURE REPLICA WALNUT CASED 'QUARE' MANTLE CLOCK  
with applied bronze style mounts, the face inscribed "Goldsmith & Silversmiths Co. Ltd. 112 Regent Street, London, W1", the back panel door applied with a brass plaque, inscribed with signatures and dated August 4th 1914/1939  
Daniel Quare (1649 - 1724) was an English clockmaker who invented a repeating watch movement in 1680

€ 200 - 400



193 A VICTORIAN 'JACOBETHAN' CARVED AND STAINED OAK UPRIGHT CABINET  
with moulded cornice above single stained glass panel door cupboard raised above a single drawer and fielded panel door cupboard, carved with human and animal masks raised on platform base. 99cm wide, 233cm high

€ 600 - 1,000



194 A JACOBEAN STYLE STAINED OAK COFFER,  
with three panel lined top above a carved frieze and panels with linen fold decoration and raised on bun feet. 117cm wide, 53cm deep

€ 300 - 500





195 A 19TH CENTURY FRENCH INLAID KINGWOOD BOWFRONT FOLDING TOP CARD TABLE, with baize lined interior, raised on slender cabriole legs decorated with cast gilt metal mounts. 82cm wide

€ 500 - 800

196 AN EBONY AND BRASS BREAKFRONT CENTRE TABLE, in Louis XV revival style, with bowed ends, long frieze drawer, on tall toupie shaped fluted legs, gilt metal gadrooned rim and mounts, the top with berainesque partie engraved brass inlay.

€ 600 - 800



197 A PAIR OF FRENCH GILTWOOD AND MARBLE TOPPED PIER TABLES, in Louis XVI style, the bowed apron carved with foliate scrollwork on cabriole legs, joined by stretcher, 55cm wide (2)

€ 250 - 400

198 A PAIR OF EDWARDIAN INLAID SATIN WALNUT BOWFRONT BEDSIDE CABINETS with raised backs above single fielded panel doors with boxwood and ebon stringing and raised on square tapering legs and spade feet. 42cm wide

€ 400 - 600







199 A VICTORIAN OAK BREAKFRONT BOOKCASE,  
the moulded dentil cornice centred by an arch above twin astragal glazed doors  
flanked by single panel doors, above panelled cupboard door base, the back  
with old shipping label from James Morton, Belfast. 276cm high, 318cm wide

€ 2,000 - 3,000



200 VICTORIAN SCHOOL  
Sundown over water  
Watercolour, 22 x 40cm  
Signed indistinctly bottom left  
€ 200 - 300



201 ALEXANDER WILLIAMS RHA  
(1846-1930)  
West of Ireland lake and mountain  
Oil on board, 11 x 31cm  
Bearing signature  
€ 150 - 250



202 VICTORIAN SCHOOL  
Shipping in choppy waters with fishermen  
A pair, watercolour, 26 x 35cm  
€ 200 - 400



203 AFTER GEORGE PHILLIP RUGENDAS  
(GERMAN, 1666-1742)  
German Battle Scene  
Copper engraving, 190 x 300mm  
€ 100 - 200



204 AFTER JOHN ATKINSON  
GRIMSHAW  
(1836-1893)  
A quayside street scene, on a foggy evening  
Oil on canvas, 54 x 74cm  
Bearing signature  
€ 200 - 400

205 HUGH DOUGLAS HAMILTON RHA  
(1734-1808)  
Viscountess Lifford  
Oval pastel and pencil heightened with white, 23 x 19cm  
(9 x 7.5")  
Inscribed verso

*Exhibited: "An Exhibition of 18th, 19th and 20th century Irish Painting", The Gorry Gallery, Nov/Dec 1997, Catalogue No.11, where purchased by present owner. Illustrated inside front cover.*

The title Viscount Lifford was created in 1781 for the 1st Baron Lifford who was Lord Chancellor of Ireland. It is thought that this portrait is of the wife of the second Viscount who was Dean of Armagh 1796 - 1830. The family seat was Meenglass House, near Stranorlar in Co. Donegal.

€ 4,000 - 6,000



206 ATTRIBUTED TO JOHN BUTLER YEATS RHA  
(1839-1922)  
Portrait of Casimir Markievicz  
Oil on canvas, 90 x 70cm  
€ 3,000 - 5,000





207 A VICTORIAN MAHOGANY SIDE CABINET, mid 19th Century, of rectangular form, with shelled superstructure above a moulded top and twin cupboard doors, applied with scroll ornament, supported on paw feet. 137cm wide and 181cm high

€ 200 - 400



208 A MAHOGANY BOWFRONT SIDE CABINET IN GEORGIAN STYLE, the moulded top with raised gallery back above twin cupboard doors and three long graduated drawers on short cabriole supports. 87cm wide

€ 200 - 300



209 A PAIR OF 19TH CENTURY FRENCH CAST BRASS ANDIRONS of architectural form with flame finial and with cast foliate scrolls, the base with inset portrait medallion. 43cm high

€ 300 - 400



210 AN EDWARDIAN BRASS MOUNTED STAINED OAK OVAL SERVING TRAY with raised gallery rail and twin handles, with button feet stamped 'Carlisle and Watts, Prince's St. Edinburgh'. 40 x 59cm

€ 100 - 200





212 AN EDWARDIAN BRASS SIX LIGHT ELECTROLIER, the elongated bar supporting a circular ring stem with three scroll arms, each supporting twin suspended lamps with moulded glass shades, 155cm long; together with a pair of matching two light wall sconces  
€ 300 - 500

213 A 19TH CENTURY MAHOGANY PILLAR TORCHÈRE, with pierced octagonal gallery railed top on turned fluted column and square base on quadrupe supports. 155cm high  
€ 600 - 800



214 A CONTINENTAL LATE 19TH CENTURY MAHOGANY RECTANGULAR SIDE CABINET, with canted corners and fitted single frieze drawer above tambour front cupboard on square taper legs. 73cm wide, 73cm high, 34cm deep  
€ 600 - 800

215 A GEORGE IV MAHOGANY RECTANGULAR WORK TABLE with single frieze drawer, having brass mounts and raised on centre pillar tripod supports with brass toe caps and casters. 62 x 47 cm  
€ 300 - 400





216 LUIS SEVIL (1817-1893)  
Still life of fruit, grapes, melons and peaches on a  
marble ledge  
Oil on canvas, 82 x 116cm  
Signed, dated 1860, and inscribed Jerez  
€ 3,000 - 5,000

217 A VICTORIAN INLAID WALNUT AND EBON BREAKFRONT  
CREDENZA,  
with arched glazed cupboard doors and flanking Corinthian columns with cast brass  
capitals flanking a central glazed cupboard, decorated with walnut banding, inlaid  
antheions and raised on bun feet. 177cm wide  
€ 1,200 - 1,500



218

A LARGE GILTWOOD FRAMED OVAL WALL MIRROR,  
with spiral turned border and inset scroll ends  
conjoined. 136 x 189cm

€ 1,000 - 2,000



219 AN IRISH EARLY 19TH CENTURY MAHOGANY SERPENTINE SIDE TABLE,  
with raised brass rail back and plate rack, having moulded rim above reeded frieze and raised on  
square reeded tapering legs and block feet. 246cm long

€ 3,000 - 5,000





220

CHARLES WILLIAM A THORNLEY  
(FL.1859-1898)

"Mount's Bay Cornwall" and "St Michael's Mount,  
Cornwall"

A pair, oil on canvas, each 24 x 39.25cm

The former signed, the latter unsigned. Each

inscribed with title verso, the latter also inscribed:

"Hervey Bruce Derek Clark Collection, Town Country  
Sale, Dublin 19-9-56".

Charles Thornley exhibited marine paintings at the  
RA from Paddington, London, during the period  
1859-1898. He signed with a number of aliases such  
as William Thornley, or variations of the surname  
Thornberry.

€ 700 - 1,000



221

A FRENCH ROSEWOOD AND GILT METAL MOUNTED BUREAU PLAT,  
in Louis XV style, the shaped rectangular top inset with a gilt tooled leather panel, with foliate cast mounts  
to each corner, over a shaped three drawer frieze on cabriole legs. 179cm wide, 80cm deep

€ 1,500 - 2,500





222 A 19TH CENTURY GILTWOOD OVERMANTLE MIRROR, with surmounted wave scrolls and foliate sprays, the angles with two ho-ho birds and raised on shallow platform base. 128cm high, 203cm wide

€ 1,000 - 2,000

223 A GEORGE IV MAHOGANY RAIL-BACK BREAKFRONT SERVING TABLE BY GILLINGTONS OF DUBLIN, the raised back with reeded top rail and acanthus carved rounded terminals above a gadroon rim and raised on two pairs of scroll legs with acanthus carved knees. 220 x 75cm

€ 2,000 - 3,000





224 A GEORGE IV STYLE MAHOGANY JARDINIERE STAND,  
of flared circular form surmounted with swing handle and brass  
liner on turned centre column and triform base, 51cm high  
€ 250 - 350

225 A SMALL LOUIS SEIZE STYLE INLAID ROSEWOOD  
BOWFRONT CHEST OF TWO DRAWERS  
with marble top and gilt mounts, and raised on stylised cabriole  
legs. 60cm wide  
€ 400 - 500



226 A GEORGE III STYLE INLAID MAHOGANY SHIELD SHAPED  
TOILET MIRROR  
on crutch frame supports, 56cm wide, 83cm high  
€ 150 - 250

227 A VICTORIAN WALNUT FRAMED UPHOLSTERED LOW SEAT  
CHAIR  
with carved crest rails, the padded back and seat covered in tapestry  
cloth and raised on cabriole legs and scroll feet  
€ 250 - 350





228 A VICTORIAN GILTWOOD PLASTER AND GESSO OVERMANTLE MIRROR, with various shaped compartments and four bracket shelves, the entire with foliate scrollwork and swags, the base with blind fret latticework. 184cm high, 170cm wide

€ 700 - 1,000

229 A FRENCH BOULLE WORKTABLE, mid 19th Century, of shaped rectangular form, the hinged top inset with geometric arabesques against a red tortoiseshell ground, enclosing a fitted interior filled with a set of silver accessories, supported on ebonsied cabriole legs, 62cm wide

€ 1,200 - 1,500





230 A CONTINENTAL CARVED GILTWOOD FRAMED UPRIGHT WALL MIRROR, surmounted with a male mask and foliate scrolls, the frame with beaded border and having moulded foliate decoration. 120 x 68cm

€ 300 - 400



231 A PAIR OF WILLIAM IV CAST IRON ANDIRONS, the fascias with cast foliage under a coronet and "WRIV". 54 x 18cm

*Provenance: Reputedly from The Customs House Dublin*

€ 250 - 350



232 A VICTORIAN MAHOGANY RECTANGULAR CHAMBER TABLE, with fitted single frieze drawer and raised on turned banded tapering legs. 78 x 46 cm

€ 250 - 350



233 A VICTORIAN STYLE MAHOGANY TOWEL RAIL, the square frame with cross stretchers and raised on platform base and splayed feet. 91cm high, 84cm long

€ 100 - 200





234 A CONTINENTAL CARVED GILTWOOD FRAMED UPRIGHT WALL MIRROR, the frame with male mask under three feathers, profusely decorated with foliate scrollwork and shells. 156 x 96.5

€ 800 - 1,200



235 A WILLIAM IV MAHOGANY RECTANGULAR WRITING TABLE with gilt tooled leather top above twin frieze drawers and raised on turned reeded tapering legs and brass castors. 107 x 56cm

€ 800 - 1,200

236 A 'FOOT'S PATENT' BRASS FRAMED RECTANGULAR 'ADAPTA' TABLE

with adjustable mechanism supporting a pale mahogany drawing board, raised on a telescope side pillar and quadruped base, with applied trade label of J. Foot & Son Ltd., New Bond St, London

€ 800 - 1,200





Lot 237

237 A CARLTONWARE BLUE GROUND JAR AND COVER,  
c.1920, gilded and enamelled with colourful trees, rocks and exotic birds. 26cm high

€ 500 - 800



Lot 238



Lot 239

238 A DOULTON LAMBETH TAPERING VASE,  
converted to table lamp, decorated with lacework in gilt, salmon and turquoise enamel, and raised on deep blue pedestal foot with brown border. 41cm high

€ 300 - 500

239 A VICTORIAN ROCKINGHAM STYLE TWO HANDLE VASE  
of shaped circular baluster form, the cerise ground decorated with cream and gilt highlights, having twin panels, one with an old mill scene and a foliate spray and raised on spreading foot. 31cm high

€ 150 - 250

240 A COLLECTION OF TEN 19TH CENTURY ENGLISH IRONSTONE JUGS,  
Imari pattern, in graduated sizes ranging from 16cm to 10cm, with sea serpent handles

€ 200 - 400

241 A SUNDERLAND LUSTRE JUG  
with game hunters in moulded relief; together with a stoneware jug with pewter lid and modern Irish premium three footed vase (3)

€ 100 - 200



Lot 240



Lot 241

242 A 19TH CENTURY PARIAN PORCELAIN  
BUST OF CLYTIE,  
unmarked, probably Minton, the classical figure  
supported on a waisted socle. 29cm high

€ 300 - 500



Lot 242

243 A LARGE CONTINENTAL GLAZED POTTERY  
AND SILVERED OVERLAY BOWL AND  
COVER,

in the Ottoman style, the domed top and body  
applied with twin side handles, decorated with  
lozenge shaped overlay, against a green and cream  
ground, waisted circular foot. 33cm high

€ 300 - 500



Lot 243

244 A 19TH CENTURY FRENCH 'SÈVRES'  
STYLE TURQUOISE GROUND CABARET  
SET,

comprising quatrefoil tray, teapot, sucrier, cream jug,  
and two cups and saucers, decorated with panels of  
exotic birds and flowers within gilt borders.

*Provenance: Stephenstown House, Dundalk.*

€ 500 - 800

245 A LATE 19TH CENTURY FRENCH 'SÈVRES'  
STYLE PORCELAIN PLATE,  
painted with exotic birds in a river landscape,  
Together with another 'Sèvres' type dish painted with  
foliage and an open fig, within a decorative ribbon  
and gilt scrolled border. 24cm diameter. (2)

€ 200 - 300



Lot 245



Lot 244





Lot 246

246 A LATE 19TH CENTURY GLAZED CERAMIC CHARACTER JUG, mask of John Bull, impressed mark and date (1898). 13.5cm high, 16cm wide

€ 150 - 250

247 A PAIR OF INDIAN MINIATURE PORTRAIT PANELS, 19th Century, of oval form, of a Sultan and Sultanness, each contained within silvered surround, each 4cm high

€ 300 - 500

248 A GERMAN FLORAL PAINTED CIRCULAR BOWL, 18th Century, finely painted with groups of summer flowers against a white ground, underglaze factory mark in blue, 25cm diameter

€ 300 - 500



Lot 248

249 A CONTINENTAL RUBY AND GILT DECORATED LIQUEUR SET comprising an elongated baluster decanter and a set of three matching glasses; Together with a single tall goblet decorated in a similar fashion

€ 100 - 150

250 A PAIR OF JAPANESE SATSUMA CIRCULAR WALL DISHES decorated in the traditional taste with figures in landscape. 30.3cm diameter

€ 80 - 120



Lot 250



Lot 249



251 A 19TH CENTURY COPENHAGEN PORCELAIN VASE

Painted with harbour views and a manor within oval reserves, the body decorated with gilding on a cream ground, the neck and base painted with bands of flowers, having twin naturalistic branch and ivy leaf handles above painted crowned intertwined initials and raised on a circular pedestal foot. 43cm high

€ 1,500 - 2,500



Lot 251

252 A CONTINENTAL PORCELAIN CARTOUCHE SHAPED EASEL DRESSING TABLE MIRROR,

the white ground painted with fruit and flowers

€ 600 - 1,000

253 A 19TH CENTURY CONTINENTAL PORCELAIN CIRCULAR DISHED PLAQUE,

Painted with a portrait of a young woman with white headdress bedecked with a garland of leaves. 10.5 diameter, contained in a gilded frame.

€ 300 - 400



Lot 252



Lot 253



254 AN EDWARDIAN BRASS CASED CARRIAGE CLOCK,  
of architectural form, with enamel dial inscribed Reid & Sons, decorated with gilded fretwork incorporating fire breathing dragons flanked by twin spiral turned pillars and raised on platform base, complete with leather bound travelling case.

*Provenance: Darver Castle, Co. Louth.*

€ 800 - 1,200



255 A FRENCH GILT BRONZE MODEL OF A DANCING LADY,  
the elegant figure with raised arms, balancing on one foot, raised on ovoid marble base, the entire 43cm high

€ 400 - 600



256 AN IRISH VICTORIAN CARVED BOG OAK FIRE BELLOWS,  
mid 19th Century, decorated to one side with a depiction of Muckross abbey and surrounded by an interlinked chain and shamrocks, 31.5cm long

€ 200 - 300

258 A PAIR OF REGENCY GILT BRASS AND TÔLE  
TWO LIGHT CANDELABRA

the twin scroll branches supported on a circular tapering column with applied leaf motifs raised on square platform base and having glass bead pendants. 39cm high

€ 800 - 1,000



259 A FRENCH MAHOAGANY BRASS AND  
GILT METAL MOUNTED BONHEUR DE  
JOUR,  
19th century, surmounted with tambour slide and slope  
top, enclosing a fitted interior, on fluted  
tapering legs, 66 cm wide

€ 400 - 600



260 A 19TH CENTURY INLAID ROSEWOOD CYLINDER BUREAU DE  
DAME,

with ormolu gallery rail, the roll-top opening to reveal a fitted interior with  
draw-out writing surface, above a single frieze drawer, and raised on cabriole  
legs with applied ormolu mounts. 75.5cm wide, 106cm high

€ 800 - 1,200





Lot 261

261 A PAIR OF BRASS MOUNTED GILDED GLASS CYLINDRICAL COLUMN TABLE LAMPS  
with leaf decoration and raised on circular platform base. 43 cm high

€ 400 - 600

262 A GEORGE II STYLE WALNUT RECTANGULAR SIDE TABLE  
with dish top fitted twin candlesticks slides and single frieze drawer on cabriole legs, with shell carved knees and raised on claw and ball feet. 77 x 46 cm

€ 500 - 800



Lot 262

263 A SQUARE STAINED WOOD GAMES TABLE  
with chess board raised on turned centre pillar quadruped base. 61 cm sq.

€ 250 - 350

264 A LARGE UPHOLSTERED SQUARE STOOL  
the padded seat covered in pink silk damask and raised on turned mahogany legs. 94 x 96 cm

€ 600 - 800



Lot 264



Lot 263



265 A PAIR OF 19TH CENTURY FRENCH  
ORMOLU AND BRASS FIGURAL  
CANDLEABRA  
in the form of cloaked putti holding aloft foliated  
torcheres with nine scroll branches and leaf  
decorated sconces, the entire raised on brass  
mounted alabaster socles. 83cm high

€ 1,500 - 2,500



266 A VICTORIAN LOUIS STYLE INLAID  
WALNUT AND MARQUETRY  
CREDENZA,  
of shaped bowfront form, fitted twin panel doors  
decorated with urns of flowers, flanked by twin  
glazed panel door cupboards, decorated with  
applied  
ormolu mounts and tongue and dart banding,  
animal and human masks and raised on platform  
base. 112cm high, 202cm wide

€ 2,000 - 3,000





Lot 268

267 IRISH SCHOOL  
(EARLY 20TH CENTURY)  
Mountain Landscape  
Oil on panel, 25 x 32cm  
€ 100 - 200

268 M. ALLAVENA  
(SPANISH, 19TH CENTURY)  
A Spanish Laneway  
Watercolour, 43 x 20cm  
Signed  
€ 100 - 150



Lot 269

269 M. WHITESIDE  
Cottage with figure of a woman  
Watercolour and ink, 26 x 37cm  
Signed  
€ 100 - 150



Lot 270

270 19TH CENTURY SCHOOL  
House on a hillside  
Monochrome watercolour, 26 x 36cm  
€ 200 - 300



271 SAM MCATEER RUA (B.1951)  
Making hay on the shores of Lough Conn  
Pastel, 80 x 55cm  
Signed  
€ 400 - 600



Lot 271

272 ERIC PATTON RHA (1925-2004)  
Western Shore  
Oil on canvas, 40 x 60cm  
Signed, also signed and inscribed verso  
€ 300 - 500



Lot 272

273 DONALD A. PATON  
(BRITISH 1879-1949)  
"Mists on Loch Oich" and "Morning Mists on Ben Venul"  
Watercolour, a pair, 17 x 25 cm  
Signed  
€ 300 - 500

274 CONTINENTAL SCHOOL  
19TH CENTURY  
Study of a Philosopher  
Miniature, oil on ivory, 7.5cm high  
Oval  
€ 250 - 350



Lot 274



Lot 273



275 19TH CENTURY MARITIME SCHOOL  
A Barque on Rough Seas  
Oil on canvas, 47.5 x 62.5cm

€ 600 - 800



276 HENRY MORNEWICK  
(FL.1827-1846)  
A Pilot Cutter Hard to Windward  
Watercolour, 37.75 x 49.5cm  
Signed

€ 300 - 500



277 CONTINENTAL SCHOOL  
(19TH CENTURY)  
Shipping off the Coast  
Oil on canvas, 33.5 x 50cm

€ 800 - 1,200



278 A.W.B.  
River landscape with sailing boats  
Watercolour, 13 x 20cm  
Signed

€ 100 - 150



279

GEOFFREY TIBBLE  
(BRITISH, 1909-1952)  
Bathers  
Oil on canvas, 70 x 90cm  
Signed and dated '51

€ 1,000 - 2,000



280

A LATE 19TH CENTURY GILT FRAMED THREE PIECE SALON SUITE,  
comprising a two-seater canapé and a pair of matching armchairs, the moulded frames with oval backs,  
curved armrests and bow front seats, raised on turned fluted legs, covered in foliate pattern tapestry cloth.  
Canapé 144cm wide; armchairs 74cm wide (3)

€ 800 - 1,200



281 A CLOISSONNÉ AND BRASS CASED MANTLE CLOCK OF ARCHITECTURAL FORM, surmounted with an urn, the bevelled glass door enclosing a bejewelled drum clock, inscribed 'Racine' 'Dublin' 'Paris make' and having a Japy Frères movement, raised on circular leaf cast feet. 39cm high

€ 300 - 500



282 A VICTORIAN WALNUT FOLDING BOOK RACK with sliding ends, having applied spiral cast brass rims and oval blue jasperware neo-classical panels and raised on platform base. 33cm long, 24cm wide

€ 200 - 400

283 AN EARLY 19TH CENTRY BLUE AND GILT RUM DECANTER of mallet form, Dublin or Bristol, with stopper, inscribed in gilt 'Rum'. 27.7cm high overall

€ 200 - 300



284 A PAIR OF HEPPLEWHITE STYLE MAHOGANY ELBOW CHAIRS with oval pierced backs, padded seats covered in tapestry cloth and raised on square tapering legs

€ 300 - 500



Lot 285

285 A GEORGE IV GILTWOOD RECTANGULAR OVERMANTLE MIRROR, with half turned pillars and foliate inner banding, raised on moulded platform base. 73cm high, 162cm wide

€ 700 - 1,000

286 A 19TH CENTURY FRENCH BOULLE AND ORMOLU CARTOUCHE SHAPED MANTLE CLOCK, the 15cm circular dial with Roman numerals on enamel panels, the case with cast foliate 'C' scrolls and surmounted with a two-handed urn finial. 50cm high

€ 600 - 800



Lot 286

287 A GEORGE IV MAHOGANY SIDEBOARD, with raised brass rail and scrollarms, having reeded rim above a central drawer flanked by twin pedestals with fielded panel doors and reeded pilasters extending to turned and spiral reeded legs and paw feet. 235cm wide, 64cm deep

€ 1,000 - 1,500



Lot 287





288 A COLLECTION OF VICTORIAN HAND PRINTED AND TRANSFER PRINTED EARTHENWARE CERAMICS, including Royal Crown Derby, Staffordshire, Masons, and Derby examples, in Imari and Chinoiserie designs etc.

€ 200 - 300



289 A 19TH CENTURY COPELAND BLUE AND WHITE 'LAZY SUSAN' decorated in the willow pattern with gilded rim having brass central handle and raised on brass pedestal foot. 45cm diameter

€ 200 - 300



290 A LATE 19TH CENTURY MINTON'S PORCELAIN PART TEA-SERVICE in the phoenix pattern and comprising twelve tea cups and saucers, ten plates, a pair of cake plates, cream jug and sugar bowl

€ 200 - 300



291 A DOULTON BURSLEM 'NANKIN' PATTERN SHAPED RECTANGULAR BASIN, a large flower and butterfly pattern meat dish and a Damascus pattern shaped rectangular servish dish (3)

€ 150 - 250



292 NINE ASSORTED IMARI PATTERN IRONSTONE JUGS, various factories and sizes

€ 120 - 180



293 A LALIQUE TWO HANDED CUT AND CLEAR GLASS LOVING CUP, pre-war mark, with leaf-cut lunette handles, marked to underside. 14.5cm high

€ 800 - 1,200



294 A LARGE JAPANESE CIRCULAR BALUSTER PORCELAIN VASE, Early 20th century, with flared wavy rim and narrow neck, the body painted and enamelled with figures under pine trees 60cm high

€ 200 - 300

295 A PAIR OF VICTORIAN BOHEMIAN GREEN GLASS LUSTRE VASES, the entire overlaid with gilt banding and foliage, castellated rims and with clear glass icicle drops, raised on platform base. 31.5cm high

€ 250 - 300





296 A VICTORIAN WALNUT FRAMED LIBRARY  
ARMCHAIR  
with moulded frame and having reclining mechanisms, the back,  
armrests and seat covered in hide and raised on scroll armrest terminals  
and knurelled scroll legs and feet  
€ 1,000 - 1,500



297 A CONTINENTAL EARLY 19TH CENTURY  
MAHOGANY FRAMED UPHOLSTERED LIBRARY  
ARMCHAIR,  
the frame carved with foliate motifs, having a brass mounted  
mahogany book stand built into the  
armrest, the button back armrests and seat covered in pink  
damask

€ 500 - 800



299 A SET OF TWELVE MAHOGANY FRAMED UPHOLSTERED PANEL BACK DINING CHAIRS in the Georgian taste, with shaped crest and seat front, covered in yellow and blue damask material and raised on square column legs and stretchers (12)

€ 3,000 - 5,000



300 A LARGE 19TH CENTURY MAHOGANY TELESCOPIC EXTENDING DINING TABLE with thumb moulded rim, over carved corners and raised on heavy carved turned legs decorated with foliate spiral banding. Five leaves. 152cm wide, 489cm long

€ 4,000 - 6,000



- 301 S. M. FRANCISCOVICH  
(C.1915-1955)  
Snowcapped Mountains at Sunset Oil on canvas, 38 x 48cm Signed

*Provenance: Padraig Mac Manus (1864 - 1929) Republican activist and journalist, Rossylongan House, Donegal and Argentina and thence by descent*

€ 100 - 150



- 302 S. M. FRANCISCOVICH  
(C.1915-1955)  
Snowcapped Mountains in a Lake Landscape; and another Oil on canvasboard, 59 x 48cm; 54 x 44cm Each Signed (2)

*Provenance: Padraig Mac Manus (1864 - 1929) Republican activist and journalist, Rossylongan House, Donegal and Argentina and thence by descent*

€ 150 - 250



- 303 S. M. FRANCISCOVICH  
(C.1915-1955)  
Snowcapped Peaks at Sunset Oil on canvasboard, 59 x 90cm Signed

*Provenance: Padraig Mac Manus (1864 - 1929) Republican activist and journalist, Rossylongan House, Donegal and Argentina and thence by descent*

€ 200 - 300



- 304 S. M. FRANCISCOVICH  
(C.1915-1955)  
Mountains in a Deep Blue Lake Landscape Oil on canvasboard, 60 x 99cm Signed

*Provenance: Padraig Mac Manus (1864 - 1929) Republican activist and journalist, Rossylongan House, Donegal and Argentina and thence by descent*

€ 200 - 300



- 305 S. M. FRANCISCOVICH  
(C.1915-1955)  
Snowcapped Mountains in a Lake Landscape Oil on canvasboard, 98 x 60cm Signed

*Provenance: Padraig Mac Manus (1864 - 1929) Republican activist and journalist, Rossylongan House, Donegal and Argentina and thence by descent*

€ 200 - 300



306

MARTIN FRANZ GLÜSING  
(1885-1956)

Crashing Waves at Sunset Oil on canvasboard, 78 x 118cm  
Signed

*Provenance: Pdraig Mac Manus (1864 - 1929)  
Republican activist and journalist, Rossyloghan House, Donegal and  
Argentina and thence by descent*

€ 200 - 400



307

PADRAIG LYNCH (B.1936)

Two yellow roses (1998)  
Oil on board, 25 x 20cm  
Signed, inscribed and dated on artist's label verso

€ 300 - 400

308

SÉÁN TIERNAN (20TH CENTURY)

Watching the Regatta, Connemara  
Oil on board, 41 x 51cm  
Signed

€ 300 - 400



309

JOHN FRANCIS SKELTON (B. 1954)

Gathering the Harvest  
Oil on board, 26 x 36cm  
Signed

€ 300 - 400



Lot 310

310 A PAIR OF REPRODUCTION TURNED MAHOGANY TABLE LAMPS with cast brass sconces raised on baluster turned columns and circular platform bases, with pleated shades. 54cm high

€ 150 - 200

311 A CAST OXIDISED BRASS EIGHT LIGHT ELECTROLIER with elongated bar and circular stem having eight flat branches. 93cm

€ 300 - 500

312 AN ARTS 'N' CRAFTS BEATEN COPPER OCTAGONAL WALL MIRROR with bevelled plate. 56 x 84cm

€ 150 - 200

313 A SET OF THREE BRASS TWO LIGHT WALL SCONCES IN THE NEO-CLASSICAL TASTE, suspended from a tied ribbon, decorated with ram's heads and foliate motifs. 61cm long

€ 150 - 250



Lot 311



314 19TH CENTURY SCHOOL  
View over the Lakes of Killarney  
Oil on canvas, 30 x 40cm  
Signed

€ 800 - 1,200

Lot 314



Lot 315

315 A 19TH CENTURY FRENCH CARVED FRUITWOOD UPHOLSTERED TUB BACK CHAIR with scroll spiral turned decoration and matching Bergere stool and a matching smaller tub chair, covered in red shell pattern material raised on square fluted tapering legs (3)

€ 1,200 - 1,800



316 A PAIR OF GEORGE IV MAHOGANY AND BRASS POLE SCREENS/STANDARD LAMPS AND SHADES, raised on scroll tripod supports

*Provenance: Donacomper House, Kildare*

€ 800 - 1,200

Lot 316





Lot 317

317 A VICTORIAN GILTWOOD AND GESSO  
RECTANGULAR PICTURE FRAME  
with inset mirror, 59 x 54 overall (23 x 18cm aperture)  
€ 150 - 200

318 A WALNUT TOWEL RAIL  
with turned rails supported on square profile side  
pillars. 103 cm high, 75 cm wide  
€ 100 - 150



Lot 318

319 AN OYSTER VENEERED AND  
CROSSBANDED COFFEE TABLE,  
of bowed rectangular shape, the figured top with  
wavy gallery and supported on an x-framed base,  
115cm wide  
€ 250 - 400

320 A FRENCH BOULLE FOLDING TOP CARD-  
TABLE,  
c.1870 in the Louis XV taste, the shaped top enclos-  
ing a green bronze lined interior, over an ormolu  
mounted frieze and cabriole legs, 90cm wide  
€ 800 - 1,200



Lot 319



Lot 320



321

A PAIR OF GEORGIAN STYLE  
UPHOLSTERED WING BACK  
ARMCHAIRS

covered in figured pink damask, with loose seat  
cushions and raised on mahogany cabriole legs and  
pad feet

€ 800 - 1,200



Lot 321

322

A GEORGE III STYLE MAHOGANY  
CIRCULAR GRADUATED THREE TIER DUMB  
WAITER

on tripod supports, with pad feet. 125cm high

€ 800 - 1,200



Lot 322

323

A WILLIAM IV ROSEWOOD RECTANGULAR  
WORK TABLE

fitted dish top decorated with inlaid brass and  
mother of pearl shell and scroll work, above twin  
drawers and sliding well on spiral legs and 'H'  
stretcher. 38 x 52 cm

€ 1,000 - 1,500



Lot 323



324 AN IRISH GEORGE IV MAHOGANY COMPACT SIDEBOARD, c. 1820, the rectangular top with raised gallery back above five frieze drawers and fan-carved angle brackets on rope-twist legs, 134cm wide

€ 300 - 500

325 A VICTORIAN MAHOGANY CONSOLE TABLE, MID-19TH CENTURY, of rectangular form with moulded top and plain frieze on heavy cabriole supports, carved with cabouchons and scroll feet, 136cm wide

€ 500 - 700



326 A VICTORIAN MAHOGANY CONSOLE TABLE, MID-19TH CENTURY, of rectangular form, the moulded top with rounded fore corners, raised on leaf-carved cabriole legs and scroll feet, 12cm wide

€ 500 - 700



327 A GEORGIAN STYLE INLAID MAHOGANY HALF CIRCULAR FOLDING TOP CARD TABLE with inset shell lozenge within a satinwood banded border raised on square tapering legs . 90cm wide, 43cm tall

€ 400 - 600



328 AN EARLY 19TH CENTURY INLAID MAHOGANY LONGCASE CLOCK, the hood with swan neck pediment, enclosing an engraved brass dial, inscribed Charles Craig, Dublin, flanked by reeded pillars, the case door flanked by quarter reeded pilasters, having satinwood paterae and oval panel decorated with ribbon tied spray and all-over stringing, raised on bracket feet. 251cm high  
€ 2,000 - 3,000



329 A 19TH CENTURY INLAID MAHOGANY LONGCASE CLOCK, the hood with scroll pediment and centred with a finial enclosing a gilt and white enamel dial, the case door with boxwood stringing flanked by quarter reeded pilasters and raised on platform base. 220cm high

€ 700 - 1,000



Lot 331

330 A FRAMED PAIR OF REPRODUCTION  
VANITY FAIR 'SPY' CARICATURE  
PRINTS  
depicting 'The Recorder' and '3rd Comissioner', each  
37 x 20cm (framed as one), together with two Wills'  
Gold Flake framed advertisements (3)

€ 80 - 100

331 MURPHY STILL  
Figures in mountain ravine with distant soldiers  
Watercolour, 14 x 18cm  
Signed

€ 150 - 250



Lot 332

332 VICTORIAN SCHOOL  
Mountain Landscape  
Pencil and wash, 18 x 25 cm

€ 50 - 60

333 A COLLECTION OF FIVE LANDSCAPE  
WATERCOLOURS,  
early to mid 20th century, some bearing signatures;  
together with two architectural prints depicting Christ  
Church and St. Patrick's Cathedral. Various measure-  
ments (7)

€ 80 - 120



Lot 333

334 AFTER GERARD TER BORCH  
(1617-1681)  
Portrait of Helena Van der Schalcke  
C.1920s print contained within a simulated toroise  
shell 'Rembrandt' frame,  
Published by the Medici Society, Bond Street, London

€ 200 - 300



335 AN ART-DECO STYLE SKI POSTER, depicting two downhill skiers and bearing inscription "FIS - WETKAMPFE 1933 INNSBRUCK". Framed, 57cm x 39cm

€ 600 - 800



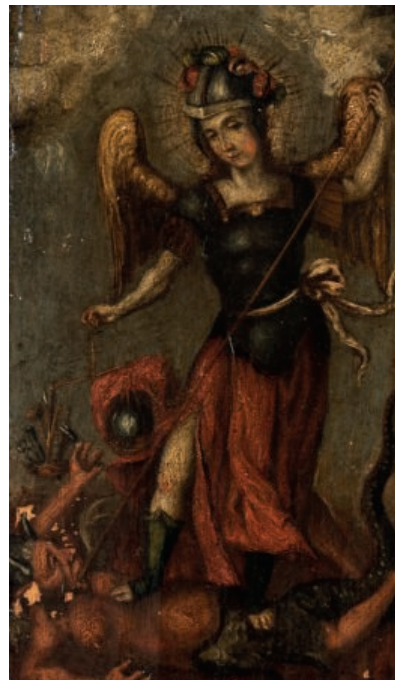
Lot 335



Lot 336

336 LIAM TREACY (1934-2004)  
Still Life with Fruit  
Oil on canvas, 30.7 x 41 cm (12 x 16").  
Signed

€ 400 - 600



Lot 337

337 ITALIAN SCHOOL  
(16/17TH CENTURY)  
St Michel - Fruitwood  
Oil on panel

€ 500 - 800

338 ITALIAN SCHOOL (19TH CENTURY)  
Classical Figure study  
Graphite sketch, 39 x 50cm

€ 300 - 400



339 19TH CENTURY SCHOOL  
Songbirds  
Oil on board, a pair, oval 23.5 x 16cm (2)

€ 300 - 500



Lot 340

340 JAMES NOLAN RHA (B.1929)  
Claremont Strand, Howth  
Oil on board, 24 x 34cm  
Signed  
€ 400 - 600



Lot 341

341 JAMES NOLAN RHA (B.1929)  
The Burrow Strand  
Oil on canvas, 33 x 43cm  
Signed  
€ 500 - 700

342 MICHAEL NOLAN (20TH CENTURY)  
The Washing  
Oil on canvas, 40.5 x 31.5cm  
Signed. Ritchie Hendriks Gallery framing label verso  
€ 300 - 500



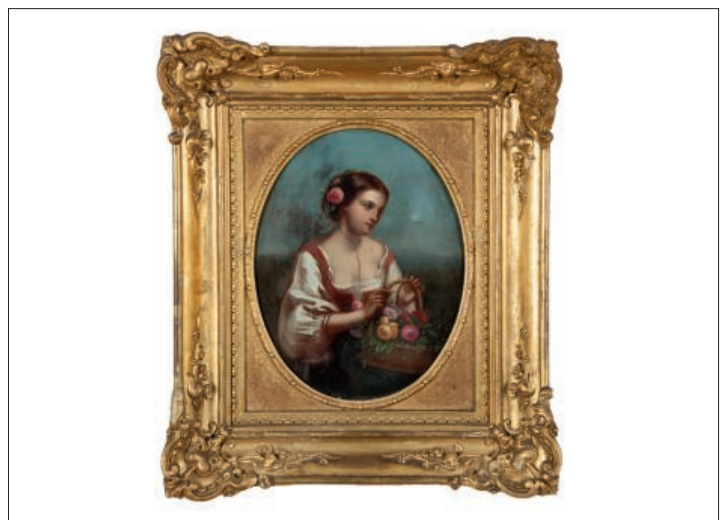
Lot 342

343 EILEEN MEAGHER (B.1946)  
Woodland Path  
Oil on canvas, 24 x 34cm  
Signed  
€ 400 - 600

344 IRISH SCHOOL  
Figure of a Girl Wearing a Bonnet and Holding a  
Basket with a Hen  
Marble, 31.8cm  
Signed indistinctly  
€ 200 - 300



Lot 343



Lot 344



345 PATRICK HENNESSY RHA (1915-1980)  
 Still Life with Fern  
 Oil on canvas, 46 x 30.5cm (18 1/8 x 12")

*Provenance: Acquired directly from the artist by the vendor's mother who was a fellow student of Hennessy's at Dundee College of Art*

€ 500 - 700



346 LOUIS E. ROCHE  
 (IRISH, EARLY 20TH CENTURY)  
 Still life study with apples  
 Oil on canvas, 45 x 60cm  
 Signed

€ 300 - 500



347 PAUL FUNGE (1944-2011)  
 Enniscorthy Street Scene  
 Oil on board, 48 x 60cm  
 Signed

€ 300 - 500



348 A JOSHEGHAN WOOL CARPET,  
Central Persia, the rectangular field woven with  
graduating lozenges, medallions and scattered flowers, contained  
within multiple broad and narrow borders in red, blue and navy  
tones. 202 x 130cm

€ 300 - 500



349 A JAPANESE CARVED ANTLER KATANA SWORD,  
Meiji Period (1868-1912) of curved outline, the sectional handle with  
dragon head terminal and  
quatrefoil tsuba, holding a single edged blade with brass spacer and  
fitted scabbard, 92cm wide

€ 600 - 800

350 AN EARLY 19TH CENTURY PERCUSSION  
PISTOL,  
c.1825, with octagonal barrell and checkered walnut handle,  
stamped with proofmarks

€ 300 - 500



351 ADRIEN ETIENNE GANDEZ  
(FRENCH, 1845-1902)  
Faucheur c.1899  
Cast bronze on circular marble base  
Signed 'A. Gandez'

€ 600 - 800



- 352 AN ANTIQUE BAKTHIAR KELLI (RUNNER), originating in Chahar Mahal, West Persia, c.1890-1910, the field with large Herati design within a border of flowerheads and rosettes, linked by vines between double floral meandering guard stripes in a shaded navy blue ground. 405 x 153cm

€ 2,000 - 3,000



- 353 A SEMI ANTIQUE GEORAVAN CARPET, originating near Heriz, North West Persia, c.1920, the ivory ground with large stylised leaves and flowering grids in reds, yellows and blues within a wide lotus vine border and two guard stripes. 311 x 225cm

€ 3,000 - 4,000



- 354 A NORTH WEST PERSIAN BIBIKIBAD WOOL CARPET, the large rectangular blue ground woven with a lozenge shaped medallion, filled with flower heads and scrolling foliage and contained within a narrow chevron boarder, multiple guard stripes and side boards. 340 x 275cm

€ 600 - 1,000





Lot 355

- 355 A CARVED TIMBER FRAMED OVAL DRESSING STOOL  
with moulded rim, cane seat and raised on carved cabriole legs and having a removable seat pad. 68 x 42cm

€ 150 - 200

- 356 A CONTINENTAL INLAID WALNUT BRASS MOUNTED MIRROR DOOR WARDROBE  
with satinwood banding and raised above turned tapering squat legs. 132cm wide

€ 600 - 800

- 357 A CONTINENTAL POLYCHROME MOULDED FRAME WALL MIRROR  
of shaped rectangular form with painted foliate decoration. 76 x 65cm

€ 100 - 150

- 358 AN ART NOUVEAU STYLE RECTANGULAR PLANTER,  
decorated with three ceramic tiles. 48 x 21 x 17 cm high

€ 200 - 300



Lot 357

359 A PAIR OF CARVED GILTWOOD WALL BRACKETS, with bow fronts raised above rose head and foliate scrollwork. 40 cm wide, 49 cm high

*Provenance: Sybil Connolly sale, Adam's, 1998, where purchased by the present owner*

€ 400 - 600



360 A MATCHED SET OF TEN CORK STYLE RAILBACK DINING CHAIRS, 19th century, comprising two carvers and eight single chairs, each with rectangular backs, reeded boards, green upholstered seats, and turned tapering legs,

800 - 1,200

361 A 19TH CENTURY MAHOGANY DOUBLE DROP LEAF HUNT TABLE, extending to oval form, the plain top with moulded edge supported on squared tapering legs. 182 cm wide

€ 500 - 800





Lot 363

362 A LARGE BLACK AND WHITE PHOTOGRAPH OF A MODEL WEARING A SYBIL CONNOLLY PLEATED SILK CREATION, on location at Clonmacnoise. 152 x 91.4cm

€ 50 - 100

363 TWO CUT GLASS CENTRE/FRUIT BOWLS, each of circular form with prism cut decoration. 30cm & 20cm each

€ 120 - 180



Lot 364

364 A CAVAN CRYSTAL CUT GLASS VASE AND COVER, of ovid form, the domed top with faceted finial above a diamond cut band, the body with flutes and lozenges on a waisted circular foot. 35cm high ; together with a mallet shaped decanter and stopper. 33cm high (2)

€ 80 -120

365 A PEDESTAL BOWL OF CIRCULAR FORM cut with a broad band of diamonds below narrow flutes on star cut circular foot, 20cm diameter; Together with a cut glass circular fruit bowl, 20cm diameter; with a Waterford cut glass spill vase of flared form, and another (4)

€ 150 - 250



Lot 366

366 A PAIR OF SPANISH LLADRO PORCELAIN FIGURES, modelled as male and female barristers in standing position, 36cm high

€ 200 - 300



367 A LLADRO STYLE FIGURAL PORCELAIN GROUP MODELLED AS HUNTERS WITH DOG BY THEIR FEET, and another modelled as a young girl (2)

€ 200 - 300



Lot 367

368 A PAIR OF MODERN WHITE GLAZED POTTERY CORINTHIAN COLUMN TABLE LAMPS. 52cm high

€ 200 - 300

369 A FRENCH GILT METAL MOUNTED EVENING PURSE with needlework material decorated with putti and a gilt metal bejeweled rectangular card case (2)

€ 60 - 100



Lot 370

370 A MODERN CUT CRYSTAL CIRCULAR FRUIT BOWL, two smaller cut glass bowls and two cut glass tankards (5)

€ 100 - 200

371 A PAIR OF BODLEY & SONS, LONGPORT 'THE VINE' PATTERN OVAL MEAT DISHES and a matching oval draining dish (3)

€ 100 - 150



Lot 371



Lot 372

372 SÉAN TIERNAN (20TH CENTURY)  
 Three horses  
 Oil on canvas, 33 x 40cm  
 Signed  
 € 150 - 250



Lot 373

373 EOIN MACLOCHLAINN  
 (20TH/21ST CENTURY)  
 From a Basement Window  
 Oil on board, 61 x 51cm  
 Signed and dated '90  
 € 200 - 300

374 EOIN MACLOCHLAINN  
 (20TH/21ST CENTURY)  
 In Glendalough  
 Oil on canvas, 50 x 61cm  
 Signed and dated '90  
 € 200 - 300

375 A VIEW OF THE CITY OF CHESTER  
 Published by Alex Hogg at the Kings Arms  
 Hand coloured engraving, 22 x 33.5cm  
 € 80 - 120

376 FRANK LYNCH (20TH CENTURY)  
 Waterfall at the Clare Glens  
 Oil on canvas, 22 x 16.5cm  
 Signed  
 Together with a collection of two paintings and two prints (5)  
 € 100 - 150



Lot 374



Lot 375

377 SIR SIDNEY NOLAN  
 OM, AC (1917-1992)  
 Australia  
 Framed lithograph print, 64 x 48cm, limited edition III/X  
 Signed and numbered to margin  
 € 600 - 1,000



378 CYRIL ARTHUR FAREY (1888-1945)  
 Proposed City and County Offices, Limerick, and  
 Proposed Limerick Regional Hospital  
 Watercolour, both 39.5 x 102.5cm  
 Signed and dated (2)  
 € 800 - 1,200

379 J.S.W (EARLY 19TH CENTURY SCHOOL)  
 Relief portrait of a gentleman in profile  
 Plaster tondo, 25cm diameter  
 Signed with initials 'J.S.W. s.c.' and dated 1863  
 € 300 - 500



380 19TH CENTURY SCHOOL  
 Songbirds  
 Oil on board, a pair, 25cm x 16.5cm (2)  
 € 300 - 500





Lot 381



Lot 381

381 R GAISFORD (20TH CENTURY)  
 'Past the Finish' and 'The Meet'  
 A pair, gouache, 25 x 38cm  
 Each signed, the later dated 1936  
 € 200 - 400

382 A STAINED BEECH FRAMED ELBOW  
 CHAIR  
 with oval cane wheel back, drop-in padded seat and  
 raised on square supports; together with a stained  
 wood crutch frame cheval glass (2)  
 € 100 - 200

383 A BRASS HELMET SHAPED COAL  
 BUCKET,  
 and another similar with embossed foliate decoration  
 (2)  
 € 120 - 180

384 A WILLIAM IV MAHOGANY FRAMED DINING  
 CHAIR,  
 a reproduction dining chair and a circular oak  
 occasional table with carved Celtic decoration (3)  
 € 80 - 100



Lot 382



Lot 383





Lot 386



Lot 385

- 385 E.G. HESTER AFTER J. STURGESS  
(19TH CENTURY)  
Punchestown  
A set of four, stipple engravings, 54 x 86cm

€ 800 - 1,200

- 386 A STAINED WOOD FRAMED UPHOLSTERED ARCH BACK  
SIDE CHAIR  
in the Georgian taste, covered in green figured  
damask and raised on square tapering legs and stretchers

€ 150 - 250

- 387 A CAUCASIAN WOOL RUG WITH  
GEOMETRIC PATTERN  
in pale brown and beige within a salmon pink double  
border and guard stripe. 194 x 114 cm

€ 250 - 300

- 388 A GEORGE IV MAHOGANY RECTANGULAR  
GENTLEMAN'S WARDROBE  
with arched moulded cornice having lancet frieze  
above twin inset oval fielded panel doors on a base  
fitted four long graduated drawers with lion mask  
cast bronze handles and raised on shaped apron and  
splayed bracket feet

€ 700 - 1,000



Lot 388



Lot 389

- 389 A CHINOISERIE FRAMED UPRIGHT WALL MIRROR,  
the cream ground decorated with figural and foliate panels. 136 x 43 cm

€ 150 - 250

- 390 A CONTEMPORARY WATERFORD GLASS BOWL,  
by John Rocha, of flared conical design on pedestal foot. 32.3cm diameter

€ 100 - 200

- 391 A PENWORK AND STAINED TIMBER COAT RACK,  
decorated with three gentlemen smoking pipes, 56.5 x 32cm, together with a stained wood framed octagonal wall mirror (2)

€ 100 - 150



Lot 390

- 392 A SET OF THREE BRASS HANDLED FIRE IMPLIMENTS  
with turned ball handles

€ 80 - 120



393 A PAIR OF EARLY VICTORIAN WALNUT FRAMED ARMCHAIRS  
of compact form, the balloon backs with buttoned upholstery covered in striped material and raised on fluted tapering legs  
€ 1,000 - 1,500

394 AN EMPIRE BRASS MOUNTED SHALLOW CONSOLE TABLE  
with mirror back, having twin pillar supports and raised on a platform base with heavy paw feet. 81 cm wide, 25.3 cm deep, 76 cm high.  
€ 800 - 1,200



395 A SHERATON STYLE INLAID MAHOGANY SERPENTINE FRONT SIDE TABLE  
with raised panel back and sides, the frieze centred with an inlaid tablet, decorated with satinwood banding and raised on square tapering legs. 180 cm long  
€ 1,500 - 2,000



Lot 397

396 A SET OF THREE BRASS HANDLED FIRE IMPLEMENTS  
with reeded bell shaped handles

€ 80 - 120

397 AN ALLERTON'S CHINA 'TOBY' JUG,  
another 'Toby' jug, two Italian yellow glazed vases and  
a blue glass painted vase (5)

€ 80 - 100



Lot 398

398 TWO CAST BRASS MODELS OF STANDING  
HOUNDS  
and a shaped rectangular brass trivet

€ 30 - 50



Lot 400

399 A VICTORIAN MOULDED GLASS ROLLING  
PIN  
decorated with a miscellany of motifs, made by A.  
Ibbitson; together with a cut glass lustre candlestick,  
ashtrays etc.

€ 30 - 50

400 A CAST BRONZE MODEL OF A RABBIT AND  
HER TWO OFFSPRING,  
on an oval base, together with a brass model of three  
monkeys (2)

€ 50 - 80



401 A FRENCH 19TH CENTURY COROMANDEL, LACQUER AND GILT BRONZE MOUNTED BOMBE COMMODE, with breccia style marble top with moulded rim, fitted twin drawers with chinoiserie figural and landscape decoration. 43.3 cm deep

€ 600 - 1,000



402 AN EDWARDIAN PAINTED SATIN WALNUT UPRIGHT CABINET, fitted twin panel door cupboard opening to reveal a partially fitted interior and raised above four long drawers, the entire painted with bellflower swags and urns, in the Neo-Classical taste

€ 1,000 - 1,500

403 A PAIR OF CARVED GILTWOOD FLORENTINE FRAMES. Each 29.5 x 21cm at widest point (2)

€ 80 - 120



404 AN ENGLISH BLUE AND WHITE DECORATED BALUSTER JUG,  
a Copeland Spode shaped rectangular transfer  
printed serving dish and a Chinese polychrome shaped  
circular dish (3)

€ 80 - 100



405 A DRESDEN STYLE PORCELAIN FIGURAL GROUP  
OF A YOUNG LADY AND HER GENTLEMAN  
COMPANION,  
a pair of Meissen ring handled two-pot salt cellars, two Copeland  
Spode bon bon dishes etc.

€ 100 - 200

406 A PINK OPAQUE GLASS BALUSTER JUG  
with reeded handle, 24cm high, and miscellaneous green  
glass sherry vases etc.

€ 60 - 80



407 A LADIES GILT METAL AND TORTOISESHELL  
APPOINTMENTS DIARY  
with red silk lining, and a circular red lacquer box and a  
travel compendium of games

€ 60 - 80



Lot 408

- 408 A SUITE OF EBONISED AND GILT DECORATED CHINOISERIE FURNITURE, c.1920-30, comprising of a bowfront display cabinet, a compact two-door side cabinet, parlour chairs, three-tier cake stand, a smokers companion, standard lamp, and a small double drop leaf table, each decorated with figures and pagodas in a mountainous landscape, (9)

€ 600 - 800



Lot 409

- 409 A CHINOISERIE DECORATED TOLEWARE FIRESIDE SUITE, comprising a fender, cylindrical fuel bucket and a tray companion fitted with poker, tongs, brush and shovel, and a bowed spark guard, of conforming decoration (4)

€ 300 - 400



Lot 410

- 410 A PAIR OF EDWARDIAN ENGLISH CUT GLASS CIRCULAR TOILET JARS, Birmingham 1903, with repousse chased and engraved lids, decorated with vacant cartouches, masks, birds and foliate scrolls. 9.6cm high, 8.5cm diameter

€ 80 - 120

- 411 A VICTORIAN CUT GLASS AND BRASS OIL LAMP, the diamond cut reservoir raised on a pillar composed of three eagles on banded legs and claw feet raised on a circular domed based with beaded banding, electrified. 40cm high

€ 250 - 350



Lot 411



Lot 412

- 412 A BELLEEK SECOND PERIOD PORCELAIN TREFOIL BASKET,  
with 4 strand base and latticework sides rising to ropetwist rim, and applied with floral and shamrock ornaments.  
13.5cm diameter at widest point

€ 200 - 300



Lot 414

- 413 A VICTORIAN STYLE STAFFORDSHIRE POTTERY FOOTBATH,  
of oval form, applied with twin side handles, decorated in imari tones with prunus bamboo and flowers

€ 100 - 200

- 414 AN ENAMELLED NAPKIN RING  
labelled R.M.S Ionic, and four assorted silver napkin rings (5)

€ 80 - 120



Lot 415

- 415 A JAPANESE IVORY OKIMONO,  
Meiji period, modelled as a standing fisherman with one leg raised and holding a bamboo rod, 34cm high, signed

€ 600 - 800

- 416 A JAPANESE CARVED IVORY GROUP,  
Meiji period, carved with a dragon amongst mortals, signed 10cm high

€ 400 - 600





- 417 ARTS, ANTIQUES AND INTERIORS  
INTEREST - A COLLECTION OF HARDBACK  
REFERENCE AND COFFEE-TABLE  
BOOKS  
€ 100 - 200
- 418 A COLLECTION OF SIX LEATHER BOUND  
VOLUMES  
€ 200 - 300
- 419 THE WORKS OF ALFRED  
TENNYSON  
Ten volumes, Strahan & Co. Publishers, London  
Gilt tooled navy calf  
€ 100 - 200
- 421 ROBERT ORGAN (20TH CENTURY)  
Our Dogs, (c. 1985)  
Oil on canvas, 90 x 106cm  
Signed and titled verso, with exhibition label  
€ 700 - 1,000
- 422 GIOVANNI BATTISTA PIRANESI  
(18TH CENTURY)  
Veduta con le due Fabbriche Laterali di detta Basilica  
Etching, 395 x 540cm, framed  
€ 300 - 500
- 423 ARTHUR CLAUDE COOKE  
(1867 - 1951)  
Rowing Boat, Study  
Oil on canvas, 24.5 x 30cm  
€ 150 - 250
- 424 CONTINENTAL SCHOOL  
(20TH CENTURY)  
Cityscape  
Pastel on paper, 24.5 x 34cm  
€ 300 - 500
- 425 TOM O'REILLY (20TH CENTURY)  
"Harbour at Fenit Co. Kerry" and "View in Galway"  
A pair, acrylic on paper, 35 x 54cm and 31 x 57.5cm  
The former signed and each inscribed with title verso.  
(2)  
€ 200 - 300



# General Terms and Conditions of Business

The Auctioneer carries on business on the following terms and conditions and on such other terms or conditions as may be expressly agreed with the Auctioneer or set out in any relevant Catalogue. Conditions 12-21 relate mainly to buyers and conditions 22-32 relate mainly to sellers. Words and phrases with special meanings are defined in condition 1. Buyers and sellers are requested to read carefully the Cataloguing Practice and Catalogue Explanation contained in condition 2.

## DEFINITIONS AND GENERAL CONDITIONS

### DEFINITIONS

1. In these conditions the following words and expressions shall have the following-meanings:

'Auctioneer' – James Adam & Sons.

'Auctioneer's Commission' – The commission payable to the Auctioneer by the buyer and seller as specified in conditions 13 and 25.

'Catalogue' – Any advertisement, brochure, estimate, price list or other publication.

'Forgery' – A Lot which was made with the intention of deceiving with regard to authorship, culture, source, origin, date, age or period and which is not shown to be such in the description therefore in the Catalogue and the market value for which at the date of the auction was substantially less than it would have been had the Lot been in accordance with the Catalogue description.

'Hammer Price' – The price at which a Lot is knocked down by the Auctioneer to the buyer.

'Lot' – Any item which is deposited with the Auctioneer with a view to its sale at auction and, in particular, the item or items described against any Lot number in any Catalogue.

'Proceeds of Sale' – The net amount due to the seller being the Hammer Price of the Lot after deducting the Auctioneer's Commission thereon under condition 25 the seller's contribution towards insurance under condition 26, such VAT as is chargeable and any other amounts due by the seller to the Auctioneer in whatever capacity howsoever arising.

'Registration Form or Register' – The registration form (or, in the case of persons who have previously attended at auctions held by the Auctioneer and completed registration forms, the register maintained by the Auctioneer which is compiled from such registration forms) to be completed and signed by each prospective buyer or, where the Auctioneer has acknowledged pursuant to condition 12 that a bidder is acting as agent on behalf of a named principal, each such bidder prior to the commencement of an auction.

'Sale Order Form' – The sale order form to be completed and signed by each seller prior to the commencement of an auction.

'Total Amount Due' – The Hammer Price of the Lot sold, the Auctioneer's Commission due thereon under condition 13, such VAT as is chargeable and any additional interest, expenses or charges due hereunder.

'V.A.T.' – Value Added Tax.

### Cataloguing Practice and Catalogue Explanations

2. Terms used in Catalogues have the following meanings and the Cataloguing Practice is as follows:

The first name or names and surname of the artist;  
In the opinion of the Auctioneer a work by the artist.

The initials of the first name(s) and the surname of the artist;  
In the opinion of the Auctioneer a work of the period of the artist and which may be in whole or in part the work of the artist.

The surname only of the artist;  
In the opinion of the Auctioneer a work of the school or by one of the followers of the artist or in his style.

The surname of the artist preceded by 'after';  
In the opinion of the Auctioneer a copy of the work of the artist.  
'Signed'/'Dated'/'Inscribed';  
In the opinion of the Auctioneer the work has been signed/dated/inscribed by the artist.

'With Signature'/'with date'/'with inscription';  
In the opinion of the Auctioneer the work has been signed/dated/inscribed by a person other than the artist.

'Attributed to';  
In the opinion of the Auctioneer probably a work of the artist.

'Studio of/Workshop of'  
In the opinion of the Auctioneer a work executed in the studio of the artist and possibly under his supervision.

'Circle of';  
In the opinion of the Auctioneer a work of the period of the artist and showing his influence.  
'Follower of';  
In the opinion of the Auctioneer a work executed in the artist's style yet not necessarily by a pupil.  
'Manner of';  
In the opinion of the Auctioneer a work executed in artist's style but of a later date.  
'\*';  
None of the terms above are appropriate but in the Auctioneer's opinion the work is a work by the artist named.

## GENERAL CONDITIONS

### Auctioneer Acting as Agent

3. The Auctioneer is selling as agent for the seller unless it is specifically stated to the contrary. The Auctioneer as agent for the seller is not responsible for any default by the seller or the buyer.

### Auctioneer Bidding on behalf of Buyer

4. It is suggested that the interests of prospective buyers are best protected and served by the buyers attending at an auction. However, the Auctioneer will, if instructed, execute bids on behalf of a prospective buyer. Neither the Auctioneer nor its employees, servants or agents shall be responsible for any neglect or default in executing bids or failing to execute bids.

### Admission to Auctions

5. The Auctioneer shall have the right exercisable in its absolute discretion to refuse admission to its premises or attendance at its auctions by any person.

### Acceptance of Bids

6. The Auctioneer shall have the right exercisable in its absolute discretion to refuse any bids, advance the bidding in any manner it may decide, withdraw or divide any Lot, combine any two or more Lots and, in the case of a dispute, to put any Lot up for auction again.

### Indemnities

7. Any indemnity given under these conditions shall extend to all actions, proceedings, claims, demands, costs and expenses whatever and howsoever incurred or suffered by the person entitled to the benefit of the indemnity and the Auctioneer declares itself to be a trustee of the benefit of every such indemnity for its employees, servants or agents to the extent that such indemnity is expressed to be for their benefit.

### Representations in Catalogues

8. Representations or statements made by the Auctioneer in any Catalogue as to contribution, authorship, genuineness, source, origin, date, age, provenance, condition or estimated selling price or value is a statement of opinion only. Neither the Auctioneer nor its employees, servants or agents shall be responsible for the accuracy of any such opinions. Every person interested in a Lot must exercise and rely on their own judgment and opinion as to such matters.

9. The headings of the conditions herein contained are inserted for convenience of reference only and are not intended to be part of, or to effect, the meaning or interpretation thereof.

### Governing Law

10. These conditions shall be governed by and construed in accordance with Irish Law.

### Notices

11. Any notice or other communication required to be given by the Auctioneer hereunder to a buyer or a seller shall, where required, be in writing and shall be sufficiently given if delivered by hand or sent by post to, in the case of the buyer, the address of the buyer specified in the Registration Form or Register, and in the case of the seller, the address of the seller specified in the Sale Order Form or to such other address as the buyer or seller (as appropriate) may notify the Auctioneer in writing. Every notice or communication given in accordance with this condition shall be deemed to have been received if delivered by hand on the day and time of delivery and if delivered by post three (3) business days after posting.



#### The Buyer

12. The buyer shall be the highest bidder acceptable to the Auctioneer who buys at the Hammer Price. Any dispute which may arise with regard to bidding or the acceptance of bids shall be settled by the Auctioneer. Every bidder shall be deemed to act as principal unless the Auctioneer has prior to the auction, acknowledged in writing that a bidder is acting as agent on behalf of a named principal.

#### Commission

13. The buyer shall pay the Auctioneer a commission at the rate of 20%, exclusive of V.A.T..

#### Payment

14. Unless credit terms have been agreed with the Auctioneer before the auction the buyer of a Lot shall pay to the Auctioneer within one (1) day from the date of the auction the Total Amount Due. Notwithstanding this, the Auctioneer may, in its sole discretion, require a buyer to pay a deposit of 25% of the Total Amount Due at the conclusion of the auction.

The Auctioneer may apply any payments received by a buyer towards any sums owing from that buyer to the Auctioneer on any account whatever regardless of any directions of the buyer or his agent in that regard whether express or implied.

The Auctioneer shall only accept payment from successful bidders in cash or by the bidder's own cheque. Cheques drawn by third parties, whether in the Auctioneer's favour or requiring endorsement, shall not be accepted.

#### Reservation of Title

15. Notwithstanding delivery or passing of risk to the buyer the ownership of a Lot shall not pass to the buyer until he has paid to the Auctioneer the Total Amount Due.

#### Collection of Purchases

16. The buyer shall at his own expense collect the Lot purchased not later than seven (7) days after the date of the auction but (unless credit terms have been agreed with the Auctioneer pursuant to condition 14) not before payment to the Auctioneer of the Total Amount Due.

The buyer shall be responsible for any removal, storage and insurance charges in respect of any Lot which is not taken away within seven (7) days after the date of the auction.

The purchased Lot shall be at the buyer's risk in all respects from the earlier of the time of collection or the expiry of one (1) day from the date of the auction. Neither the Auctioneer nor its employees, servants or agents shall thereafter be liable for any loss or damage of any kind howsoever caused while a purchased Lot remains in its custody or control after such time.

#### Packaging and Handling of Purchased Lots

17. Purchased Lots may be packed and handled by the Auctioneer, its employees, servants or agents. Where this is done it is undertaken solely as a courtesy to buyers and at the discretion of the Auctioneer. Under no circumstances shall the Auctioneer, its employees, servants or agents be liable for damage of any kind and howsoever caused to glass or frames nor shall the Auctioneer be liable for the errors or omissions of, or for any damage caused by, any packers or shippers which the Auctioneer has recommended.

#### Non-Payment or Failure to Collect Purchased Lots

18. If a buyer fails to pay for and/or collect any purchased Lot by the dates herein specified for payment and collection the Auctioneer shall, in its absolute discretion and without prejudice to any other rights or remedies it may have, be entitled to exercise one or more of the following rights or remedies without further notice to the buyer:

- (a) To issue court proceedings for damages for breach of contract;
- (b) To rescind the sale of that Lot or any other Lots sold to the buyer whether at that or at any other auction;
- (c) To resell the Lot or cause it to be resold whether by public auction or private sale. In the event that there is a deficiency between the Total Amount Due by the buyer and the amount received by the Auctioneer on such resale after deduction of any necessary expenses the difference shall be paid to the Auctioneer by the buyer. Any surplus arising shall belong to the seller.
- (d) To store (whether at the Auctioneer's premises or elsewhere) and insure the purchased Lot at the expense of the buyer.
- (e) To charge interest on the Total Amount Due at the rate of 2% over and above the base rate from time to time of Bank of Ireland or if there be no such rate, the nearest equivalent thereto as determined by the Auctioneer in its absolute discretion from the date on which payment is due hereunder to the date of actual payment.
- (f) To retain that Lot or any other Lot purchased by the buyer whether at the same or any other auction and release same to the buyer only after payment to the Auctioneer of the Total Amount Due.
- (g) To apply any sums which the Auctioneer received in respect of Lots being sold by the buyer towards settlement of the Total Amount Due.
- (h) To exercise a lien on any property of the buyer in the possession of the Auctioneer or whatever reason.

#### Liability of Auctioneer and Seller

19. Prior to auction ample opportunity is given for the inspection of the Lots on sale and each buyer by making a bid acknowledges that he has, by exercising and relying on his own judgment, satisfied himself as to the physical condition, age and Catalogue description of each Lot (including but not restricted to whether the Lot is damaged or has been repaired or restored). All Lots are sold with all faults and imperfections and errors of description. None of the seller, the Auctioneer nor any of their employees, servants or agents shall be responsible for any error of description or for the condition or authenticity of any Lot. No warranty whatsoever is given by the seller or Auctioneer or by any of their employees, servants or agents in respect of any Lot and any condition or warranty express or implied by statute or otherwise is hereby specifically excluded.

#### Forgeries

20. Any amount paid by a buyer in respect of a Lot which, if it is proved within three (3) years of the date of the auction at which it was purchased, to have been a Forgery shall be refunded to the seller subject to the provisions hereof, provided that:

(a) The Lot has been returned by the buyer to the Auctioneer within three (3) years of the date of the auction in the same condition in which it was at the time of the auction together with evidence proving that it is a Forgery, the number of the Lot and the date of the auction at which it was purchased;

(b) The Auctioneer is satisfied that the Lot is a Forgery and that the buyer has and is able to transfer good and marketable title to the Lot free from any third party claims;

FURTHER PROVIDED THAT the buyer shall have no rights hereunder if:

(i) The description of the Lot in the Catalogue at the time of the auction was in accordance with the then generally accepted opinion of scholars or experts or fairly indicated that there was a conflict of such opinion;

(ii) The only method of establishing at the time of the auction in question that the Lot was a Forgery would have been by means of scientific processes which were not generally accepted for use until after the date of the auction or which were unreasonably expensive or impractical.

The buyer's sole entitlement under this condition is to a refund of the actual amount paid by him in respect of the Lot. Under no circumstances shall the Auctioneer be liable for any damage, loss (including consequential, indirect or economic loss) or expense suffered or incurred by the buyer by reason of the Lot being a Forgery.

The benefit of this condition shall be solely and exclusively for the buyer and shall not be assignable. The buyer shall for the purpose of this condition be the person to whom the original invoice in respect of the sale of the Lot is made.

#### Photographs

21. The buyer authorises the Auctioneer at any time to make use of any photographs or illustrations of the Lot purchased by the buyer for such purposes as the Auctioneer may require.

#### CONDITIONS WHICH MAINLY CONCERN THE SELLER

##### Auctioneer's Discretion

22. With regard to the sale of any Lot the Auctioneer shall have the following powers exercisable solely in the discretion of the Auctioneer:

- (i) To decide whether to offer any Lot for sale or not;
- (ii) To decide whether a particular Lot is suitable for sale by the Auctioneer and, if so, to determine which auction, the place and date of sale, the conditions of sale and the manner in which such sale should be conducted;
- (iii) To determine the description of any Lot in a Catalogue.
- (iv) To decide whether the views of any expert shall be obtained and to submit Lots for examination by any such experts.
- (v) To determine what illustration of a Lot (if any) is to be included in the Catalogue.

##### Seller's Warranty and Indemnity

23. The seller warrants to the Auctioneer and to the buyer that he is the true owner of the Lot or is legally authorised to sell the Lot on behalf of the true owner and can transfer good and marketable title to the Lot free from any third party claims. As regards Lots not held by the Auctioneer on its premises or under its control the seller warrants and undertakes to the Auctioneer and the buyer that the Lot will be available and in a deliverable state on demand by the Auctioneer or buyer. The seller shall indemnify the Auctioneer and the buyer or any of their respective employees, servants or agents against any loss or damage suffered by any of them in consequence of any breach of the above warranties or undertakings by the seller.

##### Reserves

24. Subject to the Auctioneer's discretion, the seller shall be entitled prior to the auction to place a reserve on any Lot. All reserves must be agreed in advance by the Auctioneer and entered on the Sale Order Form or subsequently be confirmed in writing to the Auctioneer prior to auction. This also applies to changes in reserves. A reserve may not be placed

upon any Lots under IR€100 in value. The reserve shall be the minimum Hammer Price at which the Lot may be sold by the Auctioneer. A reserve once in place may only be changed with the consent of the Auctioneer. A commission shall be charged on the 'knock-down' bid for Lots which fail to reach the reserve price. Such commission shall be 5% of the 'knock-down' bid. This commission and any VAT payable thereon must be paid before removal of the Lot after the auction. The minimum commission hereunder shall be IR €25. The Auctioneer may in its sole discretion sell a Lot at a Hammer Price below the reserve therefore but in such case the Proceeds of Sale to which the seller shall be entitled shall be the same as they would have been had the sale been at the reverse.

Unless a reserve has been placed on a Lot in accordance with the provisions set out above such Lot shall be put up for sale without reserve.

In the event that any reserve price is not reached at auction then for so long as the Lot remains with the Auctioneer and to the extent that the Lot has not been re-entered in another auction pursuant to condition 31 the seller authorises the Auctioneer to sell the Lot by private treaty at not less than the reserve price. The Auctioneer shall ensure that in such a case those conditions herein which concern mainly the buyer shall, with any necessary modification, apply to such sale.

#### Commission

25. The seller shall pay the Auctioneer commission at the rate of 10% on the Hammer Price of all Lots sold on behalf of the seller at Irish Art Sales and 17.5% on the Hammer Price of all Lots sold on behalf of the seller at Fine Art, Wine and Militaria Sales together with V.A.T. thereon at the applicable rate. The seller authorises the Auctioneer to deduct from the Hammer Price paid by the buyer the Auctioneer's Commission under this condition; VAT payable at the applicable rates and any other amounts due by the seller to the Auctioneer in whatever capacity howsoever arising. The seller agrees that the Auctioneer may also receive commission from the buyer pursuant to condition 13.

#### Insurance

26. Unless otherwise instructed by the seller, all Lots (with the exception of motor vehicles) deposited with the Auctioneer or put under its control for sale shall automatically be insured by the Auctioneer under the Auctioneer's own fine arts policy for such sum as the Auctioneer shall from time to time in its absolute discretion determine. The seller shall pay the Auctioneer a contribution towards such insurance at the rate of 1% of the Hammer Price plus VAT. If the seller instructs the Auctioneer not to insure a Lot then the Lot shall at all times remain at the risk of the seller who undertakes to indemnify the Auctioneer and hold the Auctioneer harmless against any and all claims made or proceedings brought against the Auctioneer of whatever nature and howsoever and wheresoever occurring for loss or damage to the Lot. The sum for which a Lot is covered for insurance under this condition shall not constitute and shall not be relied upon by the seller as a representation, warranty or guarantee as to the value of the Lot or that the Lot will, if sold by the Auctioneer, be sold for such amount. Such insurance shall subsist until such time as the Lot is paid for and collected by the buyer or, in the case of Lots sold which are not paid for or collected by the buyer by the due date hereunder for payment or collection such due date or, in the case of Lots which are not sold, on the expiry of seven (7) days from the date on which the Auctioneer has notified the seller to collect the Lots.

#### Rescission of Sale

27. If before the Auctioneer has paid the Proceeds of Sale to the seller the buyer proves to the satisfaction of the Auctioneer that the Lot sold is a Forgery and the requirements of condition 20 are satisfied the Auctioneer shall rescind the sale and refund to the buyer any amount paid to the Auctioneer by the buyer in respect of the Lot.

#### Payment of Proceeds of Sale

28. The Auctioneer shall remit the Proceeds of Sale to the seller not later than thirty (30) days after the date of the auction, provided however that, if by that date, the Auctioneer has not received the Total Amount Due from the buyer then the Auctioneer shall remit the Proceeds of Sale within seven (7) working days after the date on which the Total Amount Due is received from the buyer. If credit terms have been agreed between the Auctioneer and the buyer the Auctioneer shall remit to the seller the Proceeds of Sale not later than thirty (30) days after the date of the auction unless otherwise agreed by the seller.

If before the Total Amount Due is paid by the buyer the Auctioneer pays the seller an amount equal to the Proceeds of Sale then title to the Lot shall pass to the Auctioneer.

If the buyer fails to pay the Auctioneer the Total Amount Due within fourteen (14) days after the date of the auction, the Auctioneer shall endeavour to notify the seller and take the seller's instructions on the course of action to be taken and, to the extent that it is in the sole opinion of the Auctioneer feasible, shall endeavour to assist the seller to recover the Total Amount Due from the buyer provided that nothing herein shall oblige the Auctioneer to issue proceedings against the buyer in the Auctioneer's own name. If circumstances do not permit the Auctioneer to take instructions from the seller or, if after notifying the seller, it does not receive instructions within seven (7) days, the Auctioneer reserves the right, and is hereby authorised by the seller at the seller's expense, to agree special terms for payments of the Total Amount Due, to remove, store and insure the Lot sold, to settle claims made by or against the buyer on such terms as the Auctioneer shall in its absolute discretion think fit, to take such steps as are necessary to collect monies due by the buyer to the seller and, if necessary, to rescind the sale and refund money to the buyer.

#### Payment of Proceeds to Overseas Sellers

29. If the seller resides outside Ireland the Proceeds of Sale shall be paid to such seller in

Irish Punts unless it was agreed with the seller prior to the auction that the Proceeds of Sale would be paid in a currency (other than Irish Punts) specified by the seller in which case the Proceeds of Sale shall be paid by the Auctioneer to the seller in such specified currency (provided that that currency is legally available to the Auctioneer in the amount required) calculated at the rate of exchange quoted to the Auctioneer by its bankers on the date of payment.

#### Charges for Withdrawn Lots

30. Once catalogued, Lots withdrawn from sale before proofing/publication of Catalogue will be subject to commission of 5% of the Auctioneer's latest estimate of the auction price of the Lot withdrawn together with VAT thereon and any expenses incurred by the Auctioneer in relation to the Lot. If Lots are withdrawn after proofing or publication of Catalogue they will be subject to a commission of 10% of the Auctioneer's latest estimate of the auction price of the Lot withdrawn together with VAT thereon and any expenses incurred by the Auctioneer in relation to the Lot. All commission hereunder must be paid for before Lots withdrawn may be removed.

#### Unsold Lots

31. Where any Lot fails to sell at auction the Auctioneer shall notify the seller accordingly and (in the absence of agreement between the seller and the Auctioneer to the contrary) such Lot may, in the absolute discretion of the Auctioneer, be re-entered in the next suitable auction unless instructions are received from the seller to the contrary, otherwise such Lots must be collected at the seller's expense within the period of thirty (30) days of such notification from the Auctioneer.

Upon the expiry of such period the Auctioneer shall have the right to sell such Lots by public auction or private sale and on such terms as the Auctioneer in its sole discretion may think fit. The Auctioneer shall be entitled to deduct from the price received for such Lots any sums owing to the Auctioneer in respect of such Lots including without limitation removal, storage and insurance expenses, any commission and expenses due in respect of the prior auction and commission and expenses in respect of the subsequent auction together with all reasonable expenses before remitting the balance to the seller. If the seller cannot be traced the balance shall be placed in a bank account in the name of the Auctioneer for the seller. Any deficit arising shall be due from the seller to the Auctioneer. Any Lots returned at the seller's request shall be returned at the seller's risk and expense and will not be insured in transit unless the Auctioneer is so instructed by the seller.

#### Auctioneer's Right to Photographs and Illustrations

32. The seller authorises the Auctioneer to photograph and illustrate any Lot placed with it for sale and further authorises the Auctioneer to use such photographs and illustrations and any photographs and illustrations provided by the seller at any time in its absolute discretion (whether or not in connection with the auction).

Catalogue illustrations are included at the discretion of the Auctioneer. Illustration charges will be calculated on the particular category of sale. These charges are subject to change. Irish Art Sale Illustrations: €150.00 full page, €100.00 half page, €50.00 other sizes. Fine Art Illustrations: Scaled fee: €100.00 for lots sold for €3,000.00 and over, hammer price, €50.00 for lots sold under €3,000.00 hammer price. All other sales: €25.00 per illustration. All lots illustrated and not sold are charged €25.00 per illustration.

#### VAT

34. It is presumed, unless stated to the contrary, that the items listed herein are auction scheme goods as defined in the Finance Act 1995.

#### 35. Artist's Resale Rights (Droit de Suite)

#### Government Regulations (S.1. 312/2006)

Under this legislation a royalty (droit de suite) is payable to artists or the artist's heirs (if deceased in the last 70 years) of E.U. Nationality on all works resold for €3,000 or more, other than those sold by the artist or the artist's agent.

The resale royalty payable is calculated as follows:

From €3,000 to €50,000 4%  
From €50,000.01 to €200,000 3%  
From €200,000.01 to €350,000 1%  
From €350,000.01 to €500,000 0.5%  
Exceeding €500,000 0.25%

The total amount of royalty payable on any individual sale shall not exceed €12,500 The seller is liable for payment (paragraph 7.1 of Government Regulations (S.1. 312/2006) of this royalty on completion of the sale. The artist may request from the Auctioneer any information necessary to secure payment.

The Auctioneer will automatically deduct the amount due from the proceeds of sale and will hold in trust for the artist, their heirs or their representative for a period of 3 years from the date of sale. A vendor may choose to check the ARR Waiver on the Sale Receipt Contract indicating that they accept sole responsibility for the payment and authorises the Auctioneers to disclose their contact details to the artist, their heirs or their representative.

Auction Wednesday 30<sup>th</sup> September 2015 6:00pm

## IMPORTANT IRISH ART



William Conor RHA PRUA  
*The Apple Seller*  
Est: €15,000 - 20,000



Frank McKelvey RHA RUA  
*Off To The Fishing Grounds*  
Est: €10,000 - 15,000



Lilian Davidson ARHA  
*Boats At Wicklow, Dusk*  
Est: €10,000 - 15,000



William J. Leech RHA  
*Window Sill*  
Est: €6,000 - 8,000



Jack B. Yeats RHA  
*The Old Landing Place*  
Est: €25,000 - 35,000



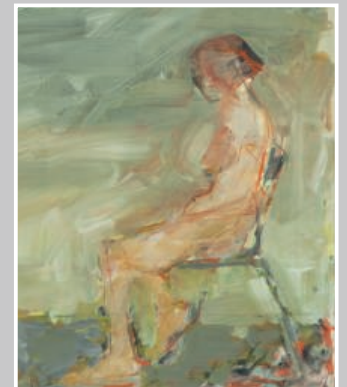
Daniel O'Neill  
*Frankie*  
Est: €20,000 - 30,000



Gerard Dillon  
*Resting Tinkers*  
Est: €25,000 - 35,000



Colin Middleton RHA MBE  
*Flowers Of The Wilderness*  
Est: €15,000 - 20,000



Basil Blackshaw HRHA  
*Sitting Nude (1990)*  
Est: €10,000 - 15,000

Viewing in both Belfast and Dublin:

10<sup>th</sup> - 17<sup>th</sup> September at the Ava Gallery, Clondeboye, Co. Down

27<sup>th</sup> - 30<sup>th</sup> September at 26 St. Stephen's Green, Dublin. D02 X665









ADAM'S Est. 1887

COUNTRY HOUSE COLLECTIONS  
AT SLANE CASTLE, CO MEATH

AUCTION TUES 13<sup>th</sup> OCTOBER 2015

NATHANIEL HONE RA 1718 - 1784  
*A MOTHER AND CHILD IN ELEGANT INTERIOR*  
OIL ON CANVAS 50x40

EST €20,000 - 30,000

ON VIEW

SATURDAY 10<sup>th</sup> & SUNDAY 11<sup>th</sup> OCTOBER 11AM - 5PM

MONDAY 12<sup>th</sup> OCTOBER 10AM - 5PM

Contact - Stuart Cole, Nick Nicholson, or James O'Halloran  
info@adams.ie or 01-6760261

WWW.ADAMS.IE





ADAM'S Est 1887